

**2022**

# **SUMMER MEETING**

Scott Westerfield

**MDOT**

Director of Structures,  
State Bridge Engineer



# Outline

🌉 Bridge Division Breakdown

🌉 Funding

🌉 Projects

🌉 Discussion Topics

🌉 ????

# Outline

 **Bridge Division Breakdown**

 **Funding**

 **Projects**

 **Discussion Topics**

 **????**

# Bridge Division Breakdown

 **37 total employees currently**

 **Three main sections**


 **Design**

 **16 employees**

 **Avg. experience of designers is 3.4 years**


 **Hydraulics**

 **7 employees**

 **Avg. experience is 12 years**

 **Inspection and Ratings**

 **7 employees**

 **Avg. experience is 22.3 years**

# Outline

🌉 Bridge Division Breakdown

🌉 Funding

🌉 Projects

🌉 Discussion Topics

🌉 ????

# ERBR Program Part 3

## Emergency Road And Bridge Repair (ERBR) Fund:

- 🚧 **Senate Bill 2780**
- 🚧 **\$100 M from General Fund**
- 🚧 **Focus on Bridges but Roads can be considered**
- 🚧 **Grant application format**
- 🚧 **MDOT was excluded from submitting applications this year**
- 🚧 **Projects awarded at this Tuesday's MTC Meeting**

# Federal Funding

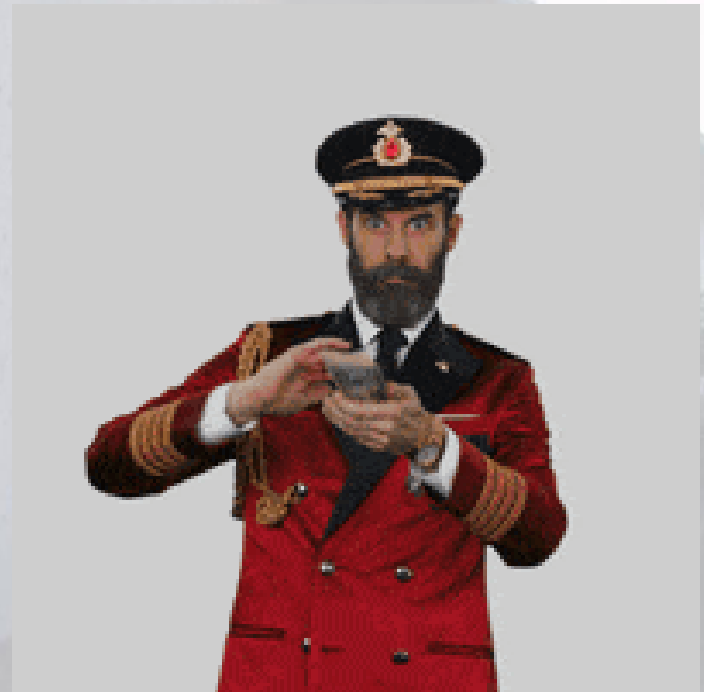
- 🏗️ **IIJA – MDOT will receive an additional ~ \$200M/year**
- 🏗️ **Bridge Budget will increase slightly for next several years**

# Additional State Funding

🏠 \$45M Maintenance  
Projects – Paving

🏠 \$40M Federal  
Infrastructure Match

🏠 \$35M Capacity  
Projects





# Additional State Funding

Well La Dee

**“Jack Squat”**

Freakin Da!

Not gonna amount to jack squat!



# Outline

🌉 Bridge Division Breakdown

🌉 Funding

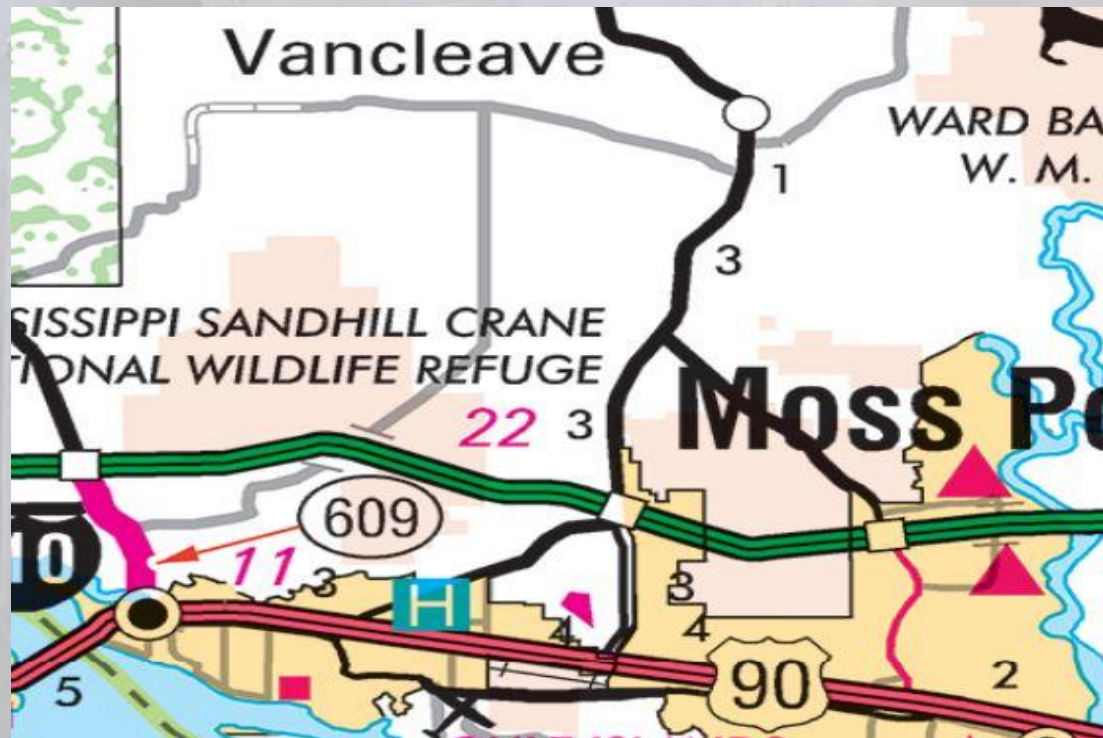
🌉 Projects

🌉 Discussion Topics

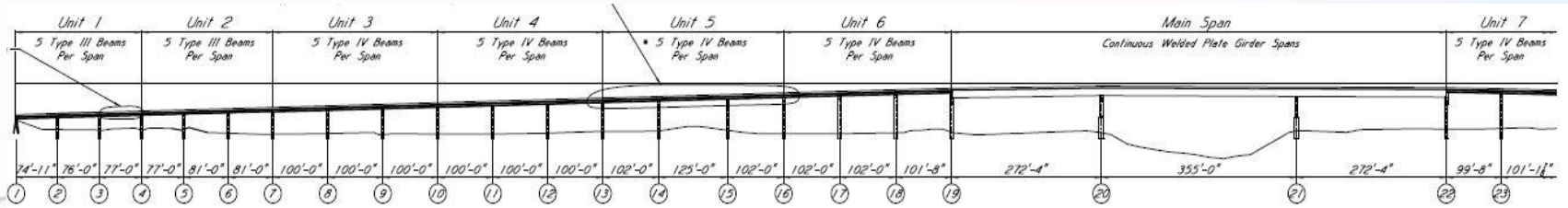
🌉 ????

# SR 57 From I-10 to Vancleave

1. Approx. \$200 M Project
2. 7.4 miles in length
3. Designed in mid 2000's
4. Lets in October 2022
5. 13 New Bridges



# SR 16/149 Yazoo County



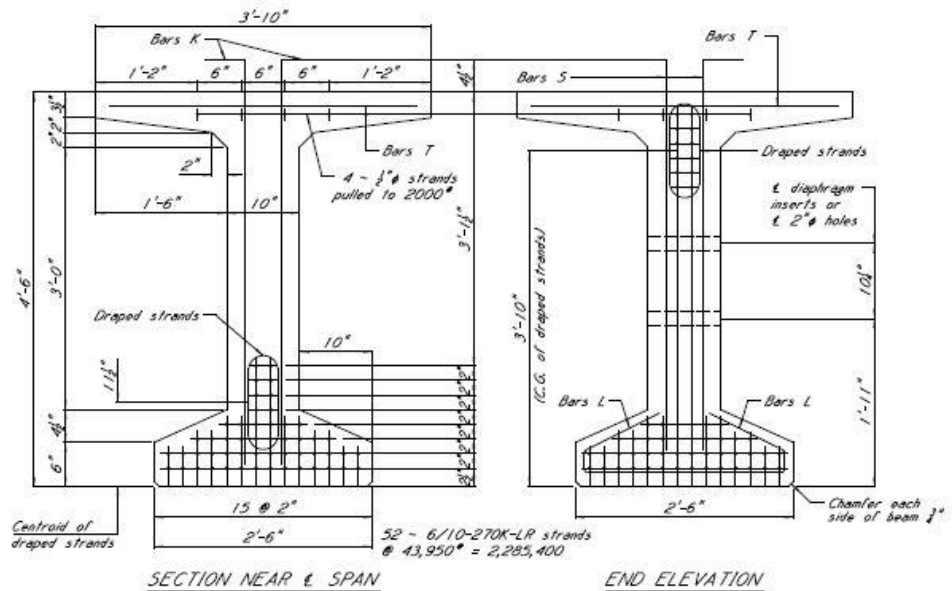
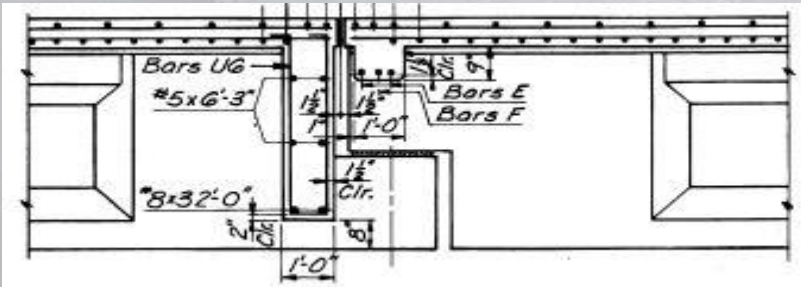
## BT-54+4



Need to span 125 ft.



Have to maintain existing section depth



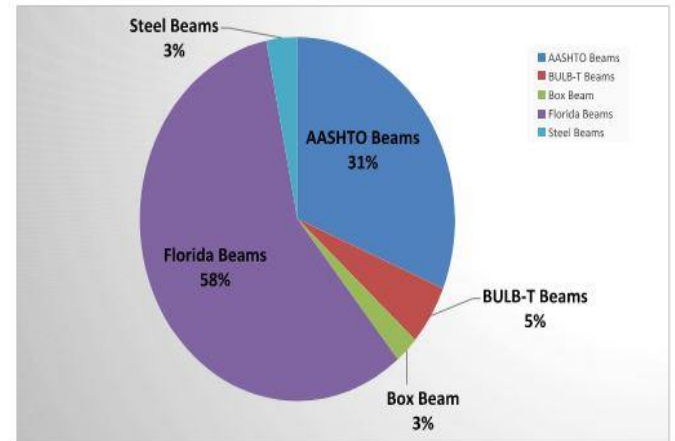
Thanks,  
Tim

# 2022-2023 MS Bridge Projects

County	Route	Let Date	Total Bridges	I+2	II+2	III	IV	BT-54	BT-63	BT-72	BT-54+4	Voided Slabs	Box Beams	FIB 25	FIB 36	FIB 45	FIB 54	FIB 63	FIB 72	FIB 78	Haunched	FIB 84	Steel
Simpson	MS 149	8/23/2022	4												1,691	8,495	2,120	895					
Clarke	MS 145	8/23/2022	2												1,043	548							
Leflore	MS 442	9/27/2022	5											1,760	3,350	1,175							
Copiah	US 51	10/25/2022	1													717							
Jackson	SR 57	10/25/2022	13	15,111			20,655		3,061	1,404													
Pearl River	MS 43	11/22/2022	1												891								
Yalobusha	US 51	11/22/2022	4												2,933	546		2,366					
Holmes	MS 12	11/22/2022	1											594	417								
Copiah	MS 27	1/24/2023	1												1,527								
Rankin	MS 18	1/24/2023	1												1,144								
Union	MS 178	1/24/2023	1											472		715							
Attala	MS 35	1/24/2023	1													655							
Choctaw	MS 407	1/24/2023	2											1,076	1,197								
Choctaw	MS 415	1/24/2023	1												499								
Sunflower	MS 8	1/24/2023	1												1,842		805						
Rankin	US 80	1/24/2023	2										2,774										
Kemper	MS 397	3/28/2023	2											395	1,491	573							
Jefferson Davis	MS 184	3/28/2023	1											2,510									
Webster	MS 182	4/25/2023	1												1,890								
Hancock	I-10	4/25/2023	1													2,190							
Humphries	MS 12	4/25/2023	1																				3,640
Madison	US 51	5/23/2023	4												5,991	687	4,878	837					
Franklin	US 98	5/23/2023	1													1,872					3,360		
Yazoo	SR 16/149	1/24/2023	1					1,017			624												
<b>Totals:</b>			<b>53</b>	<b>15,111</b>	<b>0</b>	<b>0</b>	<b>20,655</b>	<b>1,017</b>	<b>3,061</b>	<b>1,404</b>	<b>624</b>	<b>0</b>	<b>2,774</b>	<b>6,807</b>	<b>25,906</b>	<b>16,301</b>	<b>9,675</b>	<b>4,098</b>	<b>0</b>	<b>0</b>	<b>3,360</b>	<b>0</b>	<b>3,640</b>

<b>AASHTO Beams</b>	<b>35,766</b>	<b>L.F.</b>	<b>31%</b>
<b>BULB-T Beams</b>	<b>6,106</b>	<b>L.F.</b>	<b>5%</b>
<b>Box Beam</b>	<b>2,774</b>	<b>L.F.</b>	<b>2%</b>
<b>Florida Beams</b>	<b>66,147</b>	<b>L.F.</b>	<b>58%</b>
<b>Steel Beams</b>	<b>3,640</b>	<b>L.F.</b>	<b>3%</b>

Total Bridge Repair Projects Projected: 13



# Outline

🌉 Bridge Division Breakdown

🌉 Funding

🌉 Projects

🌉 Discussion Topics

🌉 ????

# Discussion Topics

- 🏗️ **0.7" Strands**
- 🏗️ **Model as the legal document**
- 🏗️ **Girder stability**

# Outline

🌉 Bridge Division Breakdown

🌉 Funding

🌉 Projects

🌉 Discussion Topics

🌉 ????



# How to Kick a Football



- Must have good consistent alignment
  - Needs to be repeatable
- When you get set, don't move around

# How to Kick a Football



- Plant foot placement
  - About your foot length from ball
  - Even with instep or heel
- Shoulders & hips level
- Kicking leg cocked
- Body lean

# How to Kick a Football



- Ball contact
  - $\frac{1}{4}$  point of ball
  - Foot turned down and out
  - Contact on the hard part of the foot
- Ball position

# How to Kick a Football



- Leg lock at contact
- Follow thru

# Done Incorrectly

**ESPN COLLEGE FOOTBALL PRIMETIME**

**#ESPNCFBThursday**

<b>OLE MISS</b> 20	<b>MISS ST</b> 21	<b>0:04</b>
4-7	5-6	4th   20

**ESPN** NCAAW | Houston 63 | 18 Syracuse 86 | FINAL

**MONDAY NIGHT FOOTBALL** **VIKINGS** • **SEAHAWKS** **GET ESPN**

# Done Correctly

---



NEW HIGHWAY 49  
CONSTRUCTION STARTS  
NEXT WEEK

**Questions?**

STOP  
MESSING  
WITH  
THEM.

