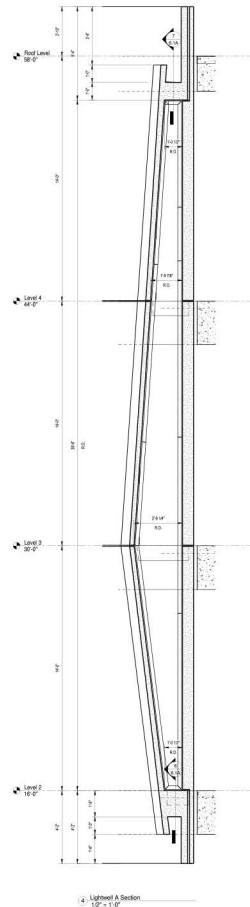
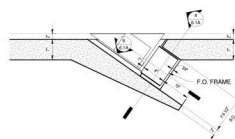
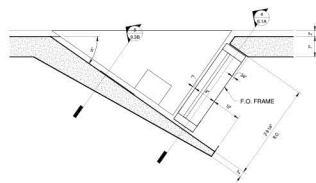
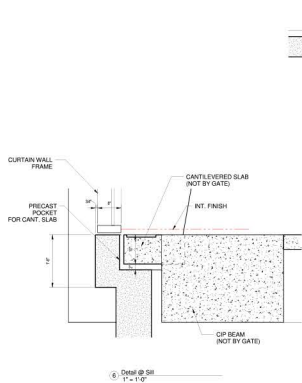
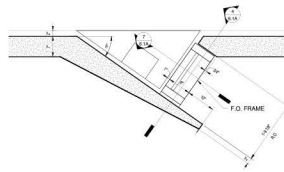
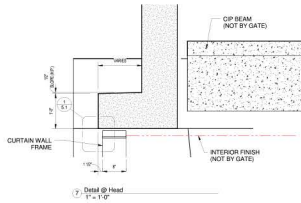
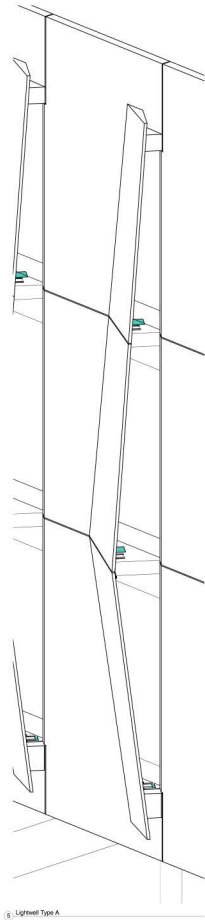


# WINDOW COORDINATION DRAWINGS



- NOTES**
1. ALL THE QUALITY WILL BE ASSURED FROM THE CONDITION OF THESE DRAWINGS.
  2. ALL DIMENSIONS ARE IN FEET UNLESS OTHERWISE NOTED.

For Construction	13.11.2018
Issued by / For Approval	13.11.2018
Rev. No.	01
Revision Description	Date

**Key**

- ① - window head
- ② - window sill
- ③ - window frame
- ④ - window frame
- ⑤ - window frame
- ⑥ - window frame
- ⑦ - window frame
- ⑧ - window frame
- ⑨ - window frame
- ⑩ - window frame
- ⑪ - window frame
- ⑫ - window frame
- ⑬ - window frame
- ⑭ - window frame
- ⑮ - window frame
- ⑯ - window frame
- ⑰ - window frame
- ⑱ - window frame
- ⑲ - window frame
- ⑳ - window frame
- ㉑ - window frame
- ㉒ - window frame
- ㉓ - window frame
- ㉔ - window frame
- ㉕ - window frame
- ㉖ - window frame
- ㉗ - window frame
- ㉘ - window frame
- ㉙ - window frame
- ㉚ - window frame
- ㉛ - window frame
- ㉜ - window frame
- ㉝ - window frame
- ㉞ - window frame
- ㉟ - window frame
- ㊱ - window frame
- ㊲ - window frame
- ㊳ - window frame
- ㊴ - window frame
- ㊵ - window frame
- ㊶ - window frame
- ㊷ - window frame
- ㊸ - window frame
- ㊹ - window frame
- ㊺ - window frame
- ㊻ - window frame
- ㊼ - window frame
- ㊽ - window frame
- ㊾ - window frame
- ㊿ - window frame

- ① Devices Glass/Rising Connection
- ② Devices Panel to Panel Connection
- ③ Devices Panel to Panel Connection
- ④ Devices Panel to Panel Connection
- ⑤ Devices Panel to Panel Connection
- ⑥ Devices Panel to Panel Connection
- ⑦ Devices Panel to Panel Connection
- ⑧ Devices Panel to Panel Connection
- ⑨ Devices Panel to Panel Connection
- ⑩ Devices Panel to Panel Connection
- ⑪ Devices Panel to Panel Connection
- ⑫ Devices Panel to Panel Connection
- ⑬ Devices Panel to Panel Connection
- ⑭ Devices Panel to Panel Connection
- ⑮ Devices Panel to Panel Connection
- ⑯ Devices Panel to Panel Connection
- ⑰ Devices Panel to Panel Connection
- ⑱ Devices Panel to Panel Connection
- ⑲ Devices Panel to Panel Connection
- ⑳ Devices Panel to Panel Connection
- ㉑ Devices Panel to Panel Connection
- ㉒ Devices Panel to Panel Connection
- ㉓ Devices Panel to Panel Connection
- ㉔ Devices Panel to Panel Connection
- ㉕ Devices Panel to Panel Connection
- ㉖ Devices Panel to Panel Connection
- ㉗ Devices Panel to Panel Connection
- ㉘ Devices Panel to Panel Connection
- ㉙ Devices Panel to Panel Connection
- ㉚ Devices Panel to Panel Connection
- ㉛ Devices Panel to Panel Connection
- ㉜ Devices Panel to Panel Connection
- ㉝ Devices Panel to Panel Connection
- ㉞ Devices Panel to Panel Connection
- ㉟ Devices Panel to Panel Connection
- ㊱ Devices Panel to Panel Connection
- ㊲ Devices Panel to Panel Connection
- ㊳ Devices Panel to Panel Connection
- ㊴ Devices Panel to Panel Connection
- ㊵ Devices Panel to Panel Connection
- ㊶ Devices Panel to Panel Connection
- ㊷ Devices Panel to Panel Connection
- ㊸ Devices Panel to Panel Connection
- ㊹ Devices Panel to Panel Connection
- ㊺ Devices Panel to Panel Connection
- ㊻ Devices Panel to Panel Connection
- ㊼ Devices Panel to Panel Connection
- ㊽ Devices Panel to Panel Connection
- ㊾ Devices Panel to Panel Connection
- ㊿ Devices Panel to Panel Connection

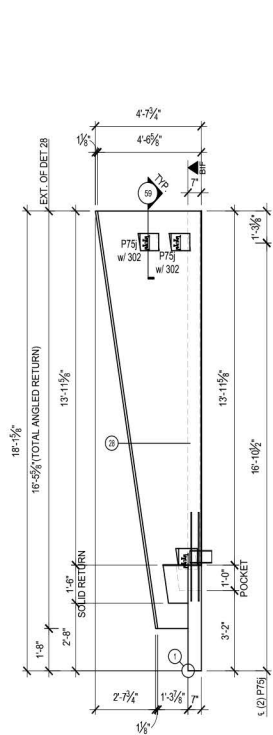
SHEET TITLE	
WINDOW PANEL DETAILS TYPE A	
SCALE: AS NOTED	SHEET NO.
1426	6.1A

THESE DRAWINGS ARE THE SOLE PROPERTY OF GATE PRECAST COMPANY AND SHALL NOT BE REPRODUCED OR COPIED IN ANY FORM WITHOUT THE WRITTEN PERMISSION OF GATE PRECAST COMPANY.

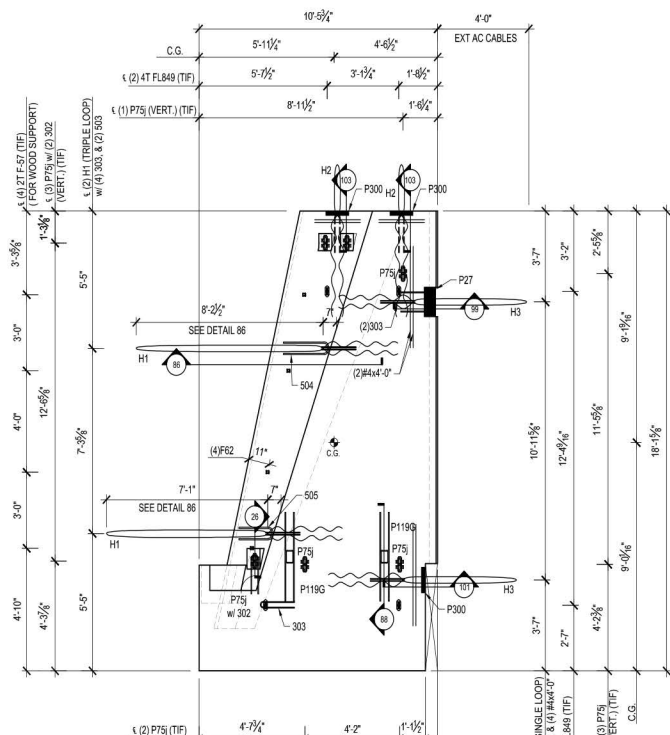




THESE DRAWINGS ARE THE SOLE PROPERTY OF GATE PRECAST COMPANY AND SHALL NOT BE REPRODUCED IN WHOLE OR PART BY ANY OTHER PARTY WITHOUT THE WRITTEN PERMISSION OF GATE PRECAST COMPANY.



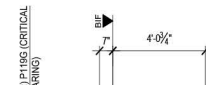
**LEFT SIDE VIEW  
(HARDWARE)**



**FORM VIEW (HARDWARE)**

SEE SHEET 2 OF 3  
FOR DETAILS, TOP & SECTIONS

PLEASE SEE SHEET 3 OF 3  
FOR REINFORCING



**RIGHT SIDE VIEW  
(HARDWARE)**

PRODUCTION NOTES:  
 1 REINFORCING SHALL BE TAKEN FROM END OF PRECAST UNLESS OTHERWISE NOTED.  
 2 ALL W/ IS CONTIGUOUS THROUGHOUT PERIMETER OF REINFORCING UNLESS OTHERWISE NOTED.  
 3 ALL DIMENSIONS FOR HARDWARE ARE TAKEN FROM CENTERLINE UNLESS OTHERWISE NOTED.  
 4 W/ ARE SPACED TO 24\"/>

		HARDWARE	
ITEM	QTY	DESCRIPTION	
P75	6	PSA 6035 ADJUSTABLE INSERT (J-FINISH)	
P119G	2	HSS 9/16x3/8x0-11 1/2\"/>           BAR (1) L17x17x1/4x0-10\"/>           & (1) FL 17x4x0-8 1/2\"/>           & (1) FL 3/8x5 1/2\"/>           x 1 1/2\"/>	
P300	3	L 2x2x1/4x1-0\"/>           w/ (2) 3/8\"/>           DIA. x3\"/>           H.A.S	
P27	1	L 5x3x3/8x1-2\"/>           w/ (2) 1/2\"/>           DIA. x3\"/>           H.A.S & (2) #4 x 1-9\"/>	
F-62	4	F-62 FLARED THIN SLAB FERRULE INSERT 3/8\"/>           x 2 1/2\"/>	
4T FL849	4	4Tx 4\"/>           LONG P-94 FLEET LIFT TANCHOR	
H1	2	3/8\"/>           AIRCRAFT CABLE (18'-0\"/>           each) w/ (2) 3/32 (DOUBLE LOOP)	
H2	2	3/8\"/>           AIRCRAFT CABLE (18'-0\"/>           each) w/ (2) 3/32 (DOUBLE LOOP)	
H3	2	3/8\"/>           AIRCRAFT CABLE (27'-0\"/>           each) w/ (2) 3/32 (SINGLE LOOP)	

**APPROVED**  
 By Kate Akulova at 11:30 am, Jul 22, 2015

**COLOR/FINISH**  
 ◆ FINISH #1 GPK# 2871K POLISHED  
 ◆ FINISH #3 GPK# 2871K SB-L

**TOP IN FORM FINISH**  
 ◆ FLOAT FINISH - GRAY

1 UNIT W/ OF CONCRETE = 150 pd  
 2 RELEASE CONCRETE STRENGTH = 3000 PSI  
 3 28 DAY CONCRETE STRENGTH = 5000 PSI  
 4 REINFORCING STEEL ASTM A601 GRADE 60  
 5 WWF STEEL - ASTM A185

DRWN: KU  
 DATE: 07/22/15  
 CHKR: CRR  
 DATE: 7-22-15

CU. YD. 3.97  
 WEIGHT: 16.066#  
 SQ. FT.: 170  
 JOB #: 14248

NO.	DATE	DESCRIPTION
REVISIONS		
1		

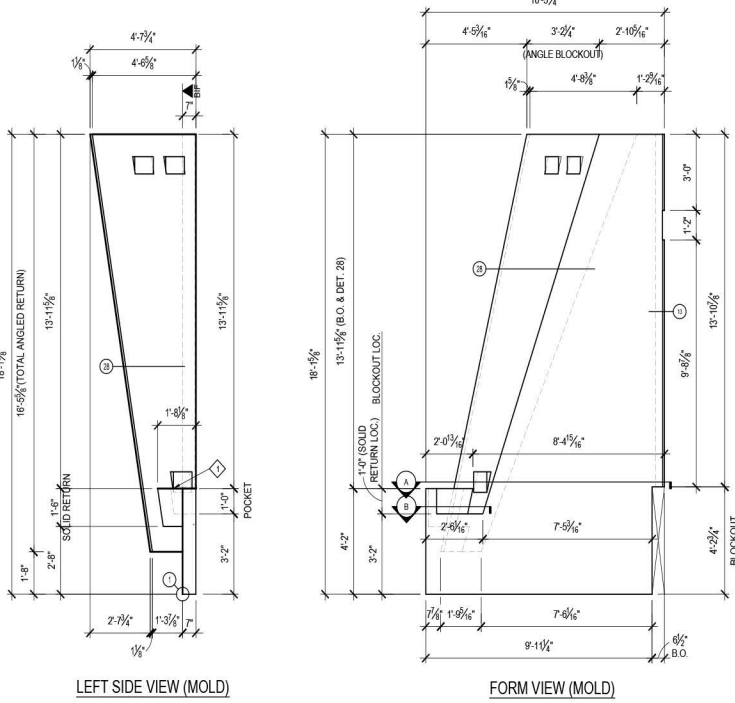
QUANTITY  
 1

PIECE MARK  
 P162



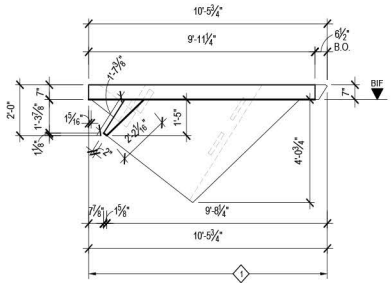


THESE DRAWINGS ARE THE SOLE PROPERTY OF SAFF HINGST COMPANY AND SHALL NOT BE REPRODUCED IN WHOLE OR IN PART BY ANY OTHER PARTY FOR REUSE ON ANY EXTENSION OF THIS PROJECT OR ANY OTHER PROJECTS WITHOUT THE EXPRESS WRITTEN PERMISSION OF SAFF HINGST COMPANY.

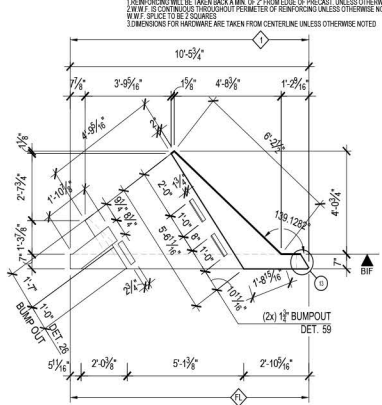


LEFT SIDE VIEW (MOLD)

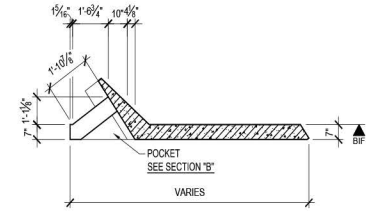
FORM VIEW (MOLD)



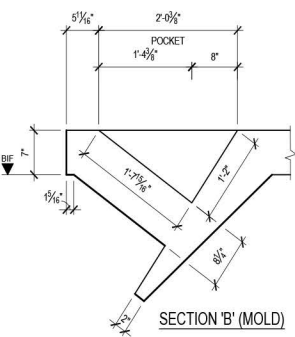
BOTTOM VIEW (MOLD)



TOP VIEW (MOLD)



SECTION 'A' (MOLD)



SECTION 'B' (MOLD)

PLEASE SEE SHEET 4 OF 4  
FOR REINFORCING

PLEASE SEE SHEET 1 OF 4  
FOR HARDWARE

**APPROVED**  
By Kate Akulova at 11:30 am, Jul 22, 2015

PLEASE SEE SHEET 1 OF 4  
FOR FINISHES

NO.	DATE:	DESCRIPTION
REVISIONS		

- 1 UNIT WT OF CONCRETE = 150 pcf
- 2 RELEASE CONCRETE STRENGTH = 3500 PSI
- 3 28 DAY CONCRETE STRENGTH = 5000 PSI
- 4 REINFORCING STEEL ASTM A63 GRADE 60
- 5 WWF STEEL ASTM A183

DRWN: KU	CU. YD.
DATE: 07/22/15	WEIGHT:
CHKR:	SQ. FT.:
DATE:	JOB #: 14248
QUANTITY	PIECE MARK
1	P162

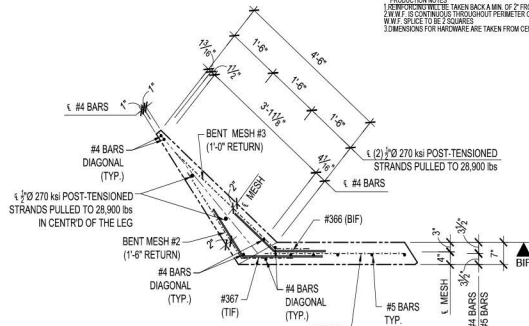




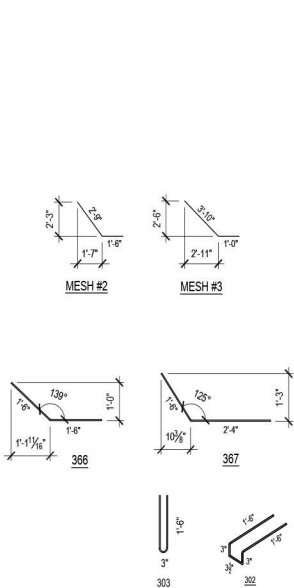


THESE DRAWINGS ARE THE SOLE PROPERTY OF SAFFI REINSTEEL COMPANY AND SHALL NOT BE REPRODUCED IN WHOLE OR IN PART OR FOR ANY OTHER PROJECTS WITHOUT THE EXPRESS WRITTEN PERMISSION OF SAFFI REINSTEEL COMPANY.

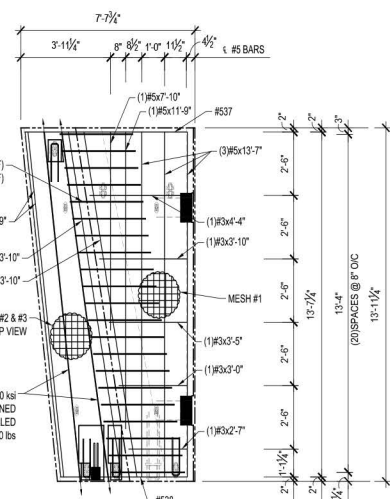
**PRODUCTION NOTES**  
 1 REINFORCING TO BE "BEND BACK A MIN. OF 7" FROM END OF PRECAST UNLESS OTHERWISE NOTED.  
 2 RELEASE CONCRETE STRENGTH = 3500 PSI  
 3 30-DAY CONCRETE THROUGHOUT PERIMETER OF REINFORCING UNLESS OTHERWISE NOTED.  
 4 W.W.F. @ 8" SPACES @ 8" O.C.  
 5 DIMENSIONS FOR HARDWARE ARE TAKEN FROM CENTERLINE UNLESS OTHERWISE NOTED.



TOP VIEW (REINFORCING)



MESH #1 (REINFORCING)



FORM VIEW (REINFORCING)

REINFORCEMENT			TOTALS
ITEM	QTY.	DESCRIPTION	TOTALS
302	4	#3 BENT BAR	15'-2" LF
303	10	#3 BENT BAR	32'-8" LF
366	21	#3 BENT BAR	63'-0" LF
367	21	#3 BENT BAR	80'-8" LF
403	1	#4 BENT BAR	5'-7" LF
504	2	#5 BENT BAR	9'-0" LF
505	1	#5 BENT BAR	5'-7" LF
537	1	#5 BENT BAR	8'-5" LF
538	1	#5 BENT BAR	7'-4" LF
1	1	#3x2-7"	2'-7" LF
1	1	#3x2-0"	3'-0" LF
1	1	#3x2-5"	3'-5" LF
1	1	#3x3-10"	3'-10" LF
1	1	#2x4-4"	4'-4" LF
4	4	#4x2-0"	8'-0" LF
4	4	#4x4-0"	16'-0" LF
2	2	#4x13-9"	27'-8" LF
4	4	#4x13-10"	55'-4" LF
1	1	#5x7-10"	7'-10" LF
1	1	#5x11-9"	11'-9" LF
3	3	#5x13-7"	40'-9" LF
MESH #1	1	1 LVR. #6xW4 @ W4 @ WWF 4'-1" x 13'-7" (O.U.)	40' 8F
MESH #2	1	1 LVR. #6xW4 @ W4 @ WWF 4'-3" (BENT) x 13'-7"	58' 8F
MESH #3	1	1 LVR. #6xW4 @ W4 @ WWF 4'-10" (BENT) x 13'-7"	55' 8F

**REVISED**  
 4:56 pm, Sep 10, 2015

PLEASE SEE SHEET 1 OF 4  
 FOR FINISHES

- 1 UNIT WT. OF CONCRETE = 150 pcf
- 2 RELEASE CONCRETE STRENGTH = 3500 PSI
- 3 30-DAY CONCRETE STRENGTH = 3000 PSI
- 4 REINFORCING STEEL ASTM A63 GRADE 60
- 5 WWF STEEL ASTM A185

DRWN: SF	CU. YD.
DATE: 7/14/15	WEIGHT:
CHKR: ----	SQ. FT.:
DATE: ----	JOB #: 14248
QUANTITY	PIECE MARK
1	P163r1

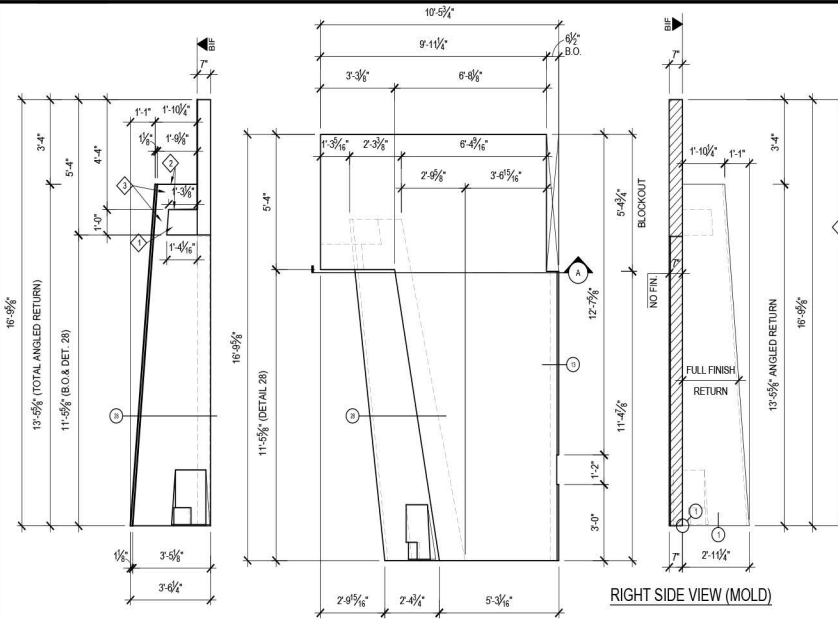
NO.	DATE	DESCRIPTION
REVISIONS		







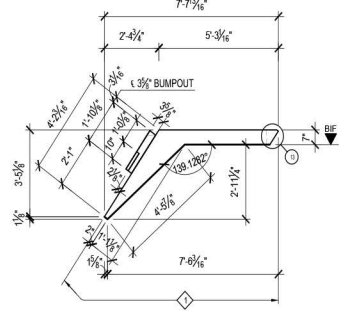
THESE DRAWINGS ARE THE SOLE PROPERTY OF SAITE PRECAST COMPANY AND SHALL NOT BE REPRODUCED IN WHOLE OR IN PART BY ANY OTHER PARTY FOR REUSE ON ANY EXTENSION OF THIS PROJECT OR ANY OTHER PROJECT WITHOUT THE EXPRESS WRITTEN PERMISSION OF SAITE PRECAST COMPANY



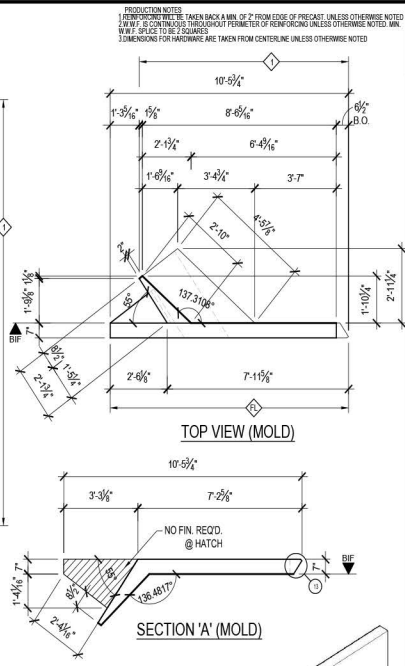
LEFT SIDE VIEW (MOLD)

FORM VIEW (MOLD)

RIGHT SIDE VIEW (MOLD)

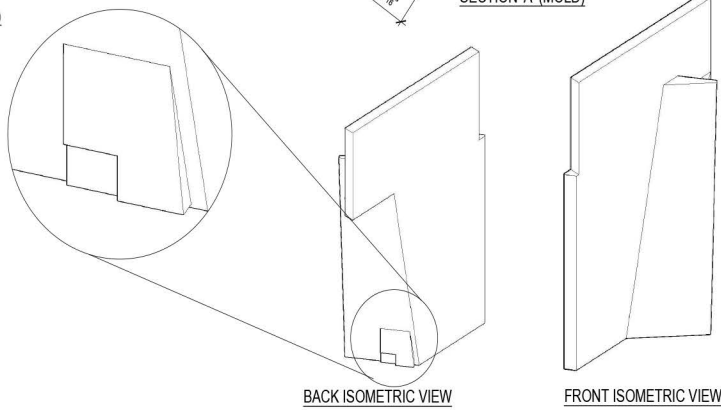


BOTTOM VIEW (MOLD)



TOP VIEW (MOLD)

SECTION 'A' (MOLD)



BACK ISOMETRIC VIEW

FRONT ISOMETRIC VIEW

PLEASE SEE SHEET 4 OF 4 FOR REINFORCING

PLEASE SEE SHEET 1 OF 4 FOR HARDWARE

**APPROVED**  
By Kate Akulova at 4:02 pm, Jul 28, 2015

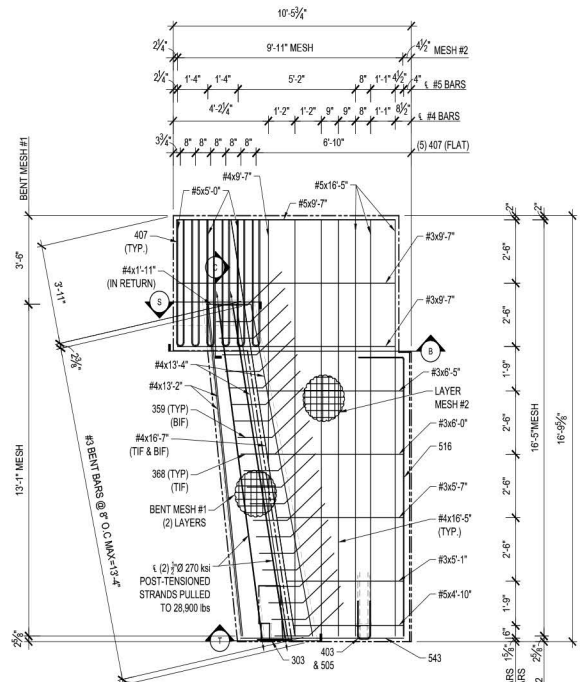
PLEASE SEE SHEET 1 OF 4 FOR FINISHES

NO.	DATE:	DESCRIPTION
REVISIONS		

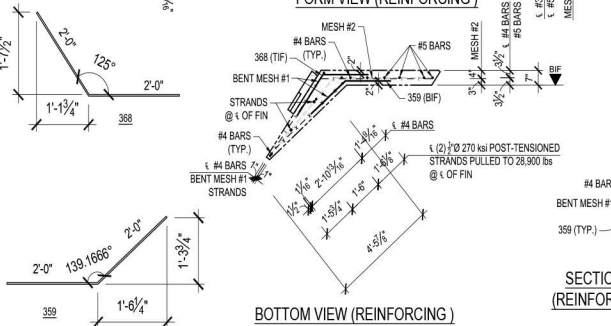
- 1 UNIT WL OF CONCRETE = 150 pcf
- 2 RELEASE CONCRETE STRENGTH = 3000 PSI
- 3 28 DAY CONCRETE STRENGTH = 5000 PSI
- 4 REINFORCING STEEL ASTM A615 GRADE 60
- 5 WWF STEEL - ASTM A185

DRWN: SLN	CU. YD.
DATE: 07/25/15	WEIGHT:
CHKR:	SQ. FT.:
DATE:	JOB #: 14248
QUANTITY	PIECE MARK
1	P164

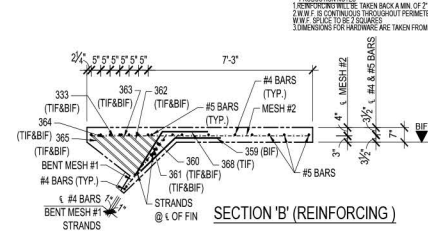
THESE DRAWINGS ARE THE SOLE PROPERTY OF GATE REINSTEEL COMPANY AND SHALL NOT BE REPRODUCED, COPIED, REPRODUCED, OR TRANSMITTED IN ANY FORM OR BY ANY MEANS, ELECTRONIC OR MECHANICAL, INCLUDING PHOTOCOPYING, RECORDING, OR BY ANY INFORMATION STORAGE AND RETRIEVAL SYSTEM, WITHOUT THE EXPRESS WRITTEN PERMISSION OF GATE REINSTEEL COMPANY.



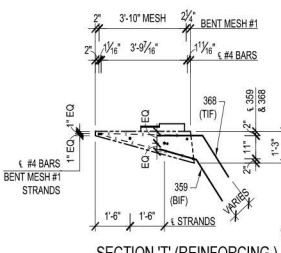
**FORM VIEW (REINFORCING)**



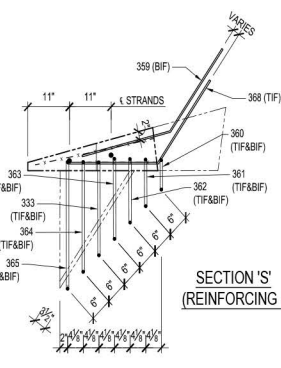
**BOTTOM VIEW (REINFORCING)**



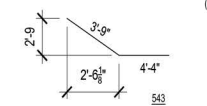
**SECTION 'B' (REINFORCING)**



**SECTION 'T' (REINFORCING)**



**SECTION 'S' (REINFORCING)**

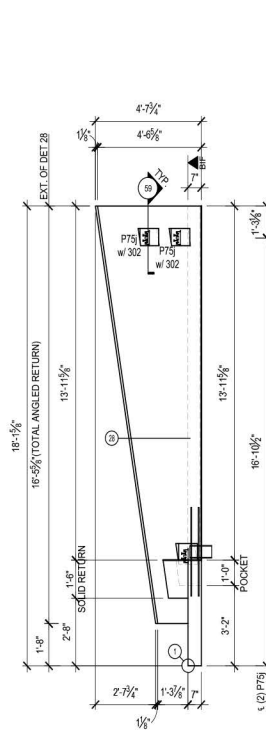


**SECTION 'C' (REINFORCING)**

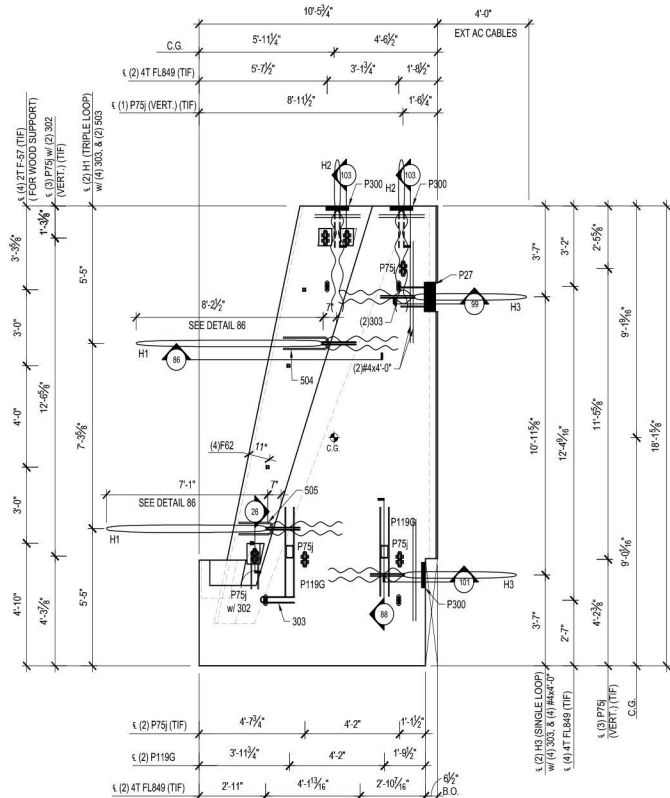
PRODUCTION NOTES:  
 1. REINFORCING MESH TO BE LACED BACK A MIN. OF 7\"/>

REINFORCEMENT		ITEM	QTY.	DESCRIPTION	TOTALS
		302	3	#3 BENT BAR	11'-4\"/>
		303	11	#3 BENT BAR	35'-6\"/>
		333	4	#3 BENT BAR	15'-4\"/>
		359	21	#3 BENT BAR	84'-0\"/>
		360	4	#3 BENT BAR	10'-0\"/>
		361	4	#3 BENT BAR	11'-0\"/>
		362	4	#3 BENT BAR	15'-0\"/>
		363	4	#3 BENT BAR	14'-4\"/>
		364	4	#3 BENT BAR	16'-8\"/>
		365	4	#3 BENT BAR	18'-0\"/>
		368	21	#3 BENT BAR	84'-0\"/>
		403	1	#4 BENT BAR	10'-0\"/>
		407	5	#4 BENT BAR	51'-0\"/>
		504	1	#5 BENT BAR	4'-8\"/>
		505	1	#5 BENT BAR	5'-0\"/>
		516	1	#5 BENT BAR	11'-2\"/>
		543	1	#5 BENT BAR	8'-1\"/>
		1		#3x5'-1\"/>	
		1		#3x5'-7\"/>	
		1		#3x6'-0\"/>	
		1		#3x6'-5\"/>	
		2		#3x7'-7\"/>	
		2		#3x8'-0\"/>	
		2		#3x8'-7\"/>	
		2		#3x9'-1\"/>	
		2		#3x9'-5\"/>	
		2		#3x10'-10\"/>	
		2		#3x11'-5\"/>	
		2		#3x12'-4\"/>	
		2		#3x13'-4\"/>	
		2		#3x14'-5\"/>	
		2		#3x15'-0\"/>	
		2		#3x16'-5\"/>	
		2		#3x17'-5\"/>	
		2		#3x18'-5\"/>	
		2		#3x19'-5\"/>	
		2		#3x20'-5\"/>	
		2		#3x21'-5\"/>	
		2		#3x22'-5\"/>	
		2		#3x23'-5\"/>	
		2		#3x24'-5\"/>	
		2		#3x25'-5\"/>	
		2		#3x26'-5\"/>	
		2		#3x27'-5\"/>	
		2		#3x28'-5\"/>	
		2		#3x29'-5\"/>	
		2		#3x30'-5\"/>	
		2		#3x31'-5\"/>	
		2		#3x32'-5\"/>	
		2		#3x33'-5\"/>	
		2		#3x34'-5\"/>	
		2		#3x35'-5\"/>	
		2		#3x36'-5\"/>	
		2		#3x37'-5\"/>	
		2		#3x38'-5\"/>	
		2		#3x39'-5\"/>	
		2		#3x40'-5\"/>	
		2		#3x41'-5\"/>	
		2		#3x42'-5\"/>	
		2		#3x43'-5\"/>	
		2		#3x44'-5\"/>	
		2		#3x45'-5\"/>	
		2		#3x46'-5\"/>	
		2		#3x47'-5\"/>	
		2		#3x48'-5\"/>	
		2		#3x49'-5\"/>	
		2		#3x50'-5\"/>	
		2		#3x51'-5\"/>	
		2		#3x52'-5\"/>	
		2		#3x53'-5\"/>	
		2		#3x54'-5\"/>	
		2		#3x55'-5\"/>	
		2		#3x56'-5\"/>	
		2		#3x57'-5\"/>	
		2		#3x58'-5\"/>	
		2		#3x59'-5\"/>	
		2		#3x60'-5\"/>	
		2		#3x61'-5\"/>	
		2		#3x62'-5\"/>	
		2		#3x63'-5\"/>	
		2		#3x64'-5\"/>	
		2		#3x65'-5\"/>	
		2		#3x66'-5\"/>	
		2		#3x67'-5\"/>	
		2		#3x68'-5\"/>	
		2		#3x69'-5\"/>	
		2		#3x70'-5\"/>	
		2		#3x71'-5\"/>	
		2		#3x72'-5\"/>	
		2		#3x73'-5\"/>	
		2		#3x74'-5\"/>	
		2		#3x75'-5\"/>	
		2		#3x76'-5\"/>	
		2		#3x77'-5\"/>	
		2		#3x78'-5\"/>	
		2		#3x79'-5\"/>	
		2		#3x80'-5\"/>	
		2		#3x81'-5\"/>	
		2		#3x82'-5\"/>	
		2		#3x83'-5\"/>	
		2		#3x84'-5\"/>	
		2		#3x85'-5\"/>	
		2		#3x86'-5\"/>	
		2		#3x87'-5\"/>	
		2		#3x88'-5\"/>	
		2		#3x89'-5\"/>	
		2		#3x90'-5\"/>	
		2		#3x91'-5\"/>	
		2		#3x92'-5\"/>	
		2		#3x93'-5\"/>	
		2		#3x94'-5\"/>	
		2		#3x95'-5\"/>	
		2		#3x96'-5\"/>	
		2		#3x97'-5\"/>	
		2		#3x98'-5\"/>	
		2		#3x99'-5\"/>	
		2		#3x100'-5\"/>	
		2		#3x101'-5\"/>	
		2		#3x102'-5\"/>	
		2		#3x103'-5\"/>	
		2		#3x104'-5\"/>	
		2		#3x105'-5\"/>	
		2		#3x106'-5\"/>	
		2		#3x107'-5\"/>	
		2		#3x108'-5\"/>	
		2		#3x109'-5\"/>	
		2		#3x110'-5\"/>	
		2		#3x111'-5\"/>	
		2		#3x112'-5\"/>	
		2		#3x113'-5\"/>	
		2		#3x114'-5\"/>	
		2		#3x115'-5\"/>	
		2		#3x116'-5\"/>	
		2		#3x117'-5\"/>	
		2		#3x118'-5\"/>	
		2		#3x119'-5\"/>	
		2		#3x120'-5\"/>	
		2		#3x121'-5\"/>	
		2		#3x122'-5\"/>	
		2		#3x123'-5\"/>	
		2		#3x124'-5\"/>	
		2		#3x125'-5\"/>	
		2		#3x126'-5\"/>	
		2		#3x127'-5\"/>	
		2		#3x128'-5\"/>	
		2		#3x129'-5\"/>	
		2		#3x130'-5\"/>	
		2		#3x131'-5\"/>	
		2		#3x132'-5\"/>	
		2		#3x133'-5\"/>	
		2		#3x134'-5\"/>	
		2		#3x135'-5\"/>	
		2		#3x136'-5\"/>	
		2		#3x137'-5\"/>	
		2		#3x138'-5\"/>	
		2		#3x139'-5\"/>	
		2		#3x140'-5\"/>	
		2		#3x141'-5\"/>	
		2		#3x142'-5\"/>	
		2		#3x143'-5\"/>	
		2		#3x144'-5\"/>	
		2		#3x145'-5\"/>	
		2		#3x146'-5\"/>	
		2		#3x147'-5\"/>	
		2		#3x148'-5\"/>	
		2		#3x149'-5\"/>	
		2		#3x150'-5\"/>	
		2		#3x151'-5\"/>	
		2		#3x152'-5\"/>	
		2		#3x153'-5\"/>	
		2		#3x154'-5\"/>	
		2		#3x155'-5\"/>	
		2		#3x156'-5\"/>	
		2		#3x157'-5\"/>	
		2		#3x158'-5\"/>	
		2		#3x159'-5\"/>	
		2		#3x160'-5\"/>	
		2		#3x161'-5\"/>	
		2		#3x162'-5\"/>	
		2		#3x163'-5\"/>	
		2		#3x164'-5\"/>	
		2		#3x165'-5\"/>	
		2		#3x166'-5\"/>	
		2		#3x167'-5\"/>	
		2		#3x168'-5\"/>	
		2		#3x169'-5\"/>	
		2		#3x170'-5\"/>	
		2		#3x171'-5\"/>	
		2		#3x172'-5\"/>	
		2		#3x173'-5\"/>	
		2		#3x174'-5\"/>	
		2		#3x175'-5\"/>	
		2		#3x176'-5\"/>	
		2		#3x177'-5\"/>	
		2		#3x178'-5\"/>	
		2		#3x179'-5\"/>	
		2		#3x180'-5\"/>	
		2		#3x181'-5\"/>	
		2		#3x182'-5\"/>	
		2		#3x183'-5\"/>	
		2		#3x184'-5\"/>	
		2		#3x185'-5\"/>	
		2		#3x186'-5\"/>	
		2		#3x187'-5\"/>	
		2		#3x188'-5\"/>	
		2		#3x189'-5\"/>	
		2		#3x190'-5\"/>	
		2		#3x191'-5\"/>	
		2		#3x192'-5\"/>	
		2		#3x193'-5\"/>	
		2		#3x194'-5\"/>	
		2		#3x195'-5\"/>	
		2		#3x196'-5\"/>	
		2		#3x197'-5\"/>	
		2		#3x198'-5\"/>	
		2		#3x199'-5\"/>	
		2		#3x200'-5\"/>	
		2		#3x201'-5\"/>	
		2		#3x202'-5\"/>	
		2		#3x203'-5\"/>	
		2		#3x204'-5\"/>	
		2		#3x205'-5\"/>	
		2		#3x206'-5\"/>	
		2		#3x207'-5\"/>	
		2		#3x208'-5\"/>	
		2		#3x209'-5\"/>	
		2		#3x210'-5\"/>	
		2		#3x211'-5\"/>	
		2		#3x212'-5\"/>	
		2		#3x213'-5\"/>	
		2		#3x214'-5\"/>	
		2		#3x215'-5\"/>	
		2		#3x216'-5\"/>	
		2		#3x217'-5\"/>	
		2		#3x218'-5\"/>	
		2		#3x219'-5\"/>	
		2		#3x220'-5\"/>	
		2		#3x221'-5\"/>	
		2		#3x222'-5\"/>	
		2		#3x223'-5\"/>	
		2		#3x224'-5\"/>	
		2		#3x225'-5\"/>	
		2		#3x226'-5\"/>	
		2		#3x227'-5\"/>	
		2		#3x228'-5\"/>	
		2		#3x229'-5\"/>	
		2		#3x230'-5\"/>	
		2		#3x231'-5\"/>	
		2		#3x232'-5\"/>	
		2		#3x233'-5\"/>	
		2		#3x234'-5\"/>	
		2		#3x235'-5\"/>	
		2		#3x236'-5\"/>	
		2		#3x237'-5\"/>	
		2		#3x238'-5\"/>	
		2		#3x239'-5\"/>	
		2		#3x240'-5\"/>	
		2		#3x241'-5\"/>	
		2		#3x242'-5\"/>	
		2		#3x243'-5\"/>	
		2		#3x244'-5\"/>	
		2		#3x245'-5\"/>	
		2		#3x246'-5\"/>	
		2		#3x247'-5\"/>	
		2		#3x248'-5\"/>	
		2		#3x249'-5\"/>	
		2		#3x250'-5\"/>	
		2		#3x251'-5\"/>	
		2		#3x252'-5\"/>	
		2		#3x253'-5\"/>	
		2		#3x254'-5\"/>	
		2		#3x255'-5\"/>	
		2		#3x256'-5\"/>	
		2			

THESE DRAWINGS ARE THE SOLE PROPERTY OF SAPE PRECAST COMPANY AND SHALL NOT BE REPRODUCED IN WHOLE OR PART BY ANY OTHER PARTY WITHOUT THE WRITTEN PERMISSION OF SAPE PRECAST COMPANY



**LEFT SIDE VIEW  
(HARDWARE)**



**FORM VIEW (HARDWARE)**

SEE SHEET 2 OF 3  
FOR DETAILS, TOP & SECTIONS

PLEASE SEE SHEET 3 OF 3  
FOR REINFORCING

**RIGHT SIDE VIEW  
(HARDWARE)**

PRODUCTION NOTES  
1 REINFORCING SHALL BE TYPED BACK A MIN. OF 7" FROM EDGE OF PRECAST UNLESS OTHERWISE NOTED.  
2 ALL W/ IS CONTIGUOUS THROUGHOUT PERIMETER OF REINFORCING UNLESS OTHERWISE NOTED. MIN. W/ IS SHALL BE TYPED TO SQUARE.  
3 DIMENSIONS FOR HARDWARE ARE TAKEN FROM CENTERLINE UNLESS OTHERWISE NOTED.

HARDWARE		
ITEM	QTY	DESCRIPTION
P75	6	PSA 6035 ADJUSTABLE INSERT (J-FINISH)
P119G	2	HSS 6"x5"x3/8"x0-11 1/2" w/ (4) #5-27 x 3708 BARS (1) #5-27 OF 3708 BAR (1) L1"x1"x1/4"x0-10" & (1) PL 1"x4"x0-6 1/2" & (1) PL 3/8"x5 1/2" x 5 1/2"
P300	3	L 2x2x1/4"x1-0" w/ (2) 3/8" DIA. x3" H.A.S
P27	1	L 5x3x3/8"x1-2" w/ (2) 1/2" DIA. x3" H.A.S & (2) #4 x 1-5"
F-62	4	F-62 FLARED THIN SLAB FERRULE INSERT 3/8" x 2 1/2"
4T FL849	4	4Tx 4" LONG P-94 FLEET LIFT TANCHOR
H1	2	3/8" AIRCRAFT CABLE (24'-0" each) w/ (2) 3/32 (DOUBLE LOOP)
H2	2	3/8" AIRCRAFT CABLE (18'-0" each) w/ (2) 3/32 (DOUBLE LOOP)
H3	2	3/8" AIRCRAFT CABLE (07'-0" each) w/ (2) 3/32 (SINGLE LOOP)

**APPROVED**  
By Kate Akulova at 10:34 am, Jul 22, 2015

**COLOR/FINISH**

- ◆ FINISH #1 GPK# 2871K POLISHED
- ◆ FINISH #3 GPK# 2871K SB-L

**TOP IN FORM FINISH**

- ◆ FLOAT FINISH - GRAY

1 UNIT W/ OF CONCRETE = 150 pd  
2 RELEASE CONCRETE STRENGTH = 3000 PSI  
3 28 DAY CONCRETE STRENGTH = 3000 PSI  
4 REINFORCING STEEL ASTM A618 GRADE 60  
5 WWF STEEL ASTM A185

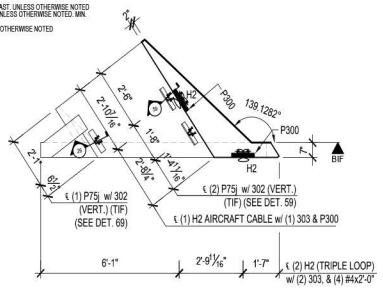
DRWN: KU	CU. YD. 3.97
DATE: 07/21/15	WEIGHT: 16.068#
CHKR: ORR	SQ. FT.: 170
DATE: 7-21-15	JOB #: 14248

NO.	DATE	DESCRIPTION
REVISIONS		
1		

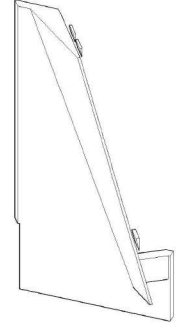
QUANTITY: 1  
PIECE MARK: P165



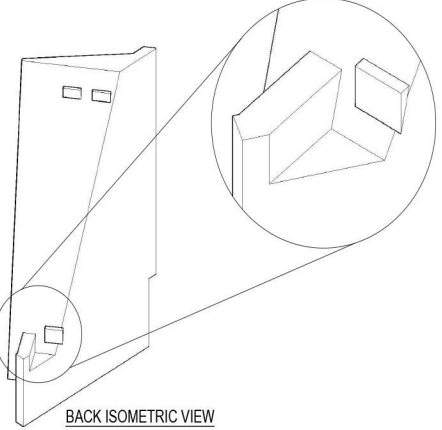
PRODUCTION NOTES:  
 FORMWORK SHALL BE MAINTAINED A MIN. OF 7' FROM EDGE OF PRECAST UNLESS OTHERWISE NOTED.  
 W/ W/ F. IS CONTROLLED THROUGHOUT PERIMETER OF REINFORCING UNLESS OTHERWISE NOTED. MIN. W/ W/ SPACE TO BE 2.0 INCHES.  
 DIMENSIONS FOR HARDWARE ARE TAKEN FROM CENTERLINE UNLESS OTHERWISE NOTED.



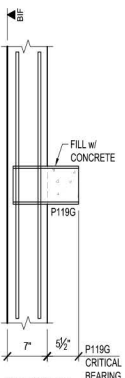
TOP VIEW (HARDWARE)



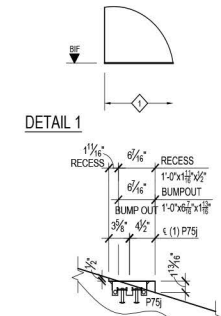
FRONT ISOMETRIC VIEW



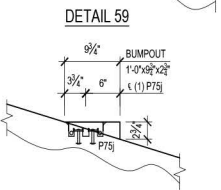
BACK ISOMETRIC VIEW



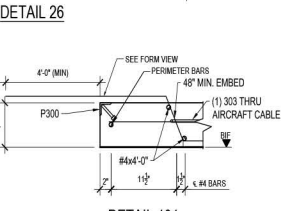
DETAIL 88



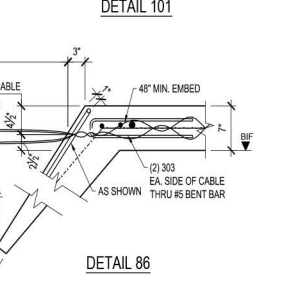
DETAIL 1



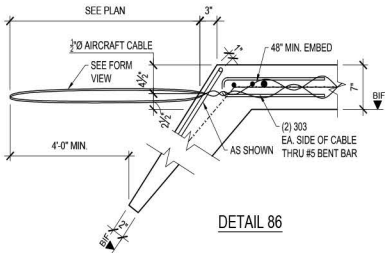
DETAIL 59



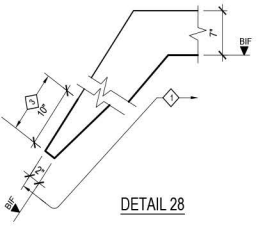
DETAIL 26



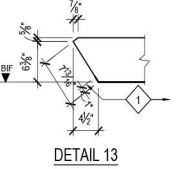
DETAIL 101



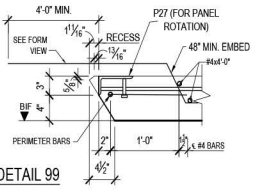
DETAIL 86



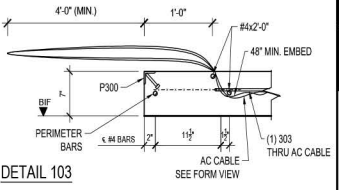
DETAIL 28



DETAIL 13



DETAIL 99



DETAIL 103

PLEASE SEE SHEET 4 OF 4 FOR REINFORCING

PLEASE SEE SHEET 1 OF 4 FOR HARDWARE

**APPROVED**  
 By *Kate Akulova* at 10:34 am, Jul 22, 2015

PLEASE SEE SHEET 1 OF 4 FOR FINISHES

1 UNIT W/ OF CONCRETE = 150 psf  
 2 RELEASE CONCRETE STRENGTH = 3500 PSI  
 3 28 DAY CONCRETE STRENGTH = 5000 PSI  
 4 REINFORCING STEEL ASTM A603 GRADE 60  
 5 W/WF STEEL - ASTM A188

DRWN: KU	CU. YD.
DATE: 07/21/15	WEIGHT:
CHKR:	SQ. FT.:
DATE:	JOB #: 14248
QUANTITY	PIECE MARK
1	P165

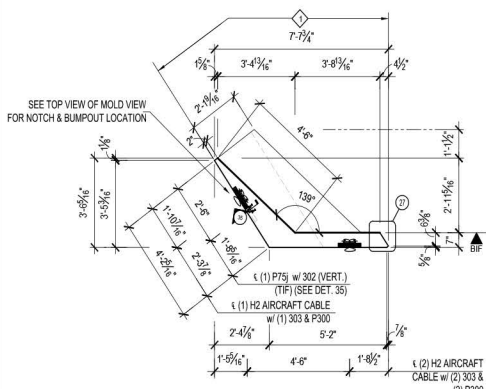
NO.	DATE	DESCRIPTION
REVISIONS		



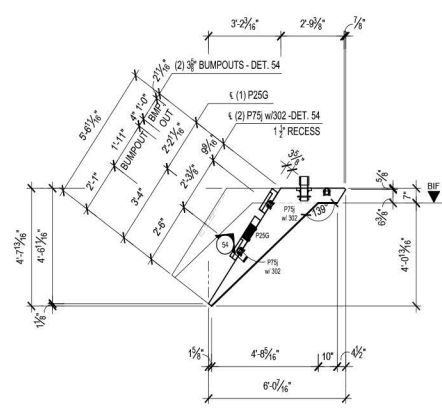




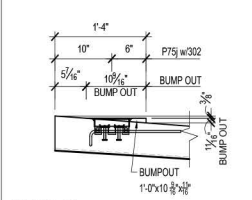
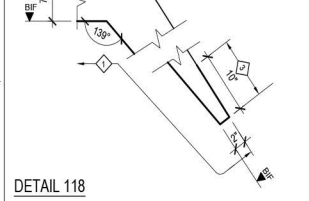
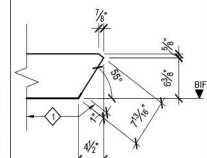
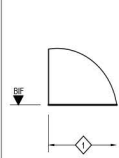
PRODUCTION NOTE:  
 DIMENSIONS ARE TAKEN FROM MIN. OF 2" PROJECTIONS OF PRECAST. UNLESS OTHERWISE NOTED.  
 2" W.F. IS CONTINUOUS THROUGHOUT PERIMETER OF REINFORCING UNLESS OTHERWISE NOTED. MIN.  
 W.F. IS PLACED TO BE 2" SQUARE.  
 DIMENSIONS FOR HARDWARE ARE TAKEN FROM CENTERLINE UNLESS OTHERWISE NOTED.



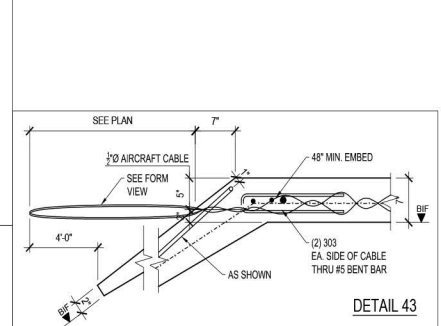
TOP VIEW (HARDWARE)



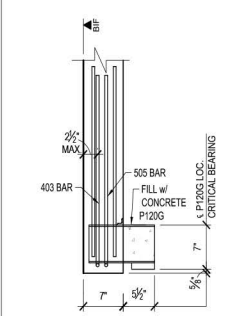
BOTTOM VIEW (HARDWARE)



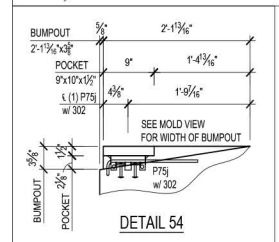
DETAIL 35



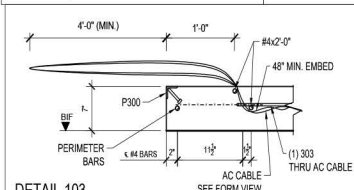
DETAIL 43



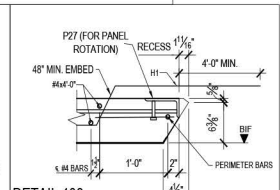
DETAIL 79



DETAIL 54



DETAIL 103



DETAIL 108

PLEASE SEE SHEET 4 OF 4 FOR REINFORCING

PLEASE SEE SHEET 1 OF 4 FOR HARDWARE

**REVISED**  
 4:56 pm, Sep 10, 2015

PLEASE SEE SHEET 1 OF 4 FOR FINISHES

NO.	DATE:	DESCRIPTION
REVISIONS		
1		1 UNIT Wt. OF CONCRETE = 150 pcf
2		2 RELEASE CONCRETE STRENGTH = 3500 PSI
3		3 28 DAY CONCRETE STRENGTH = 4000 PSI
4		4 REINFORCING STEEL-ASTM A615 GRADE 60
5		5 W.W.F STEEL-ASTM A195

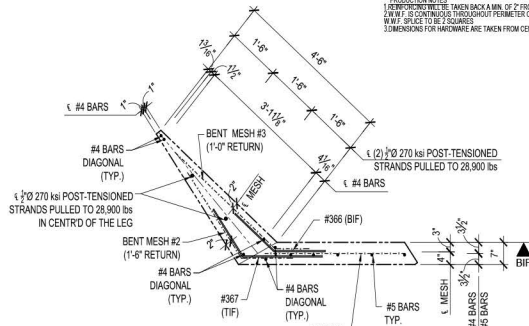
DRWN: SF	CU. YD. WEIGHT:
DATE: 07/14/15	SO. FT.:
CHKR:	JOB #: 14248
DATE:	PIECE MARK:
QUANTITY	
1	P166r1



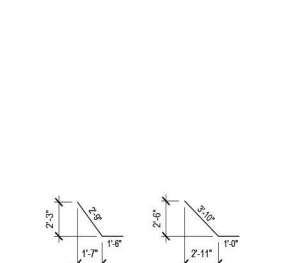
THESE DRAWINGS ARE THE SOLE PROPERTY OF SAFFI REINAST COMPANY AND SHALL NOT BE REPRODUCED IN WHOLE OR IN PART BY ANY OTHER PARTY FOR REUSE OR ANY OTHER PURPOSES WITHOUT THE EXPRESS WRITTEN PERMISSION OF SAFFI REINAST COMPANY.

**PRODUCTION NOTES**

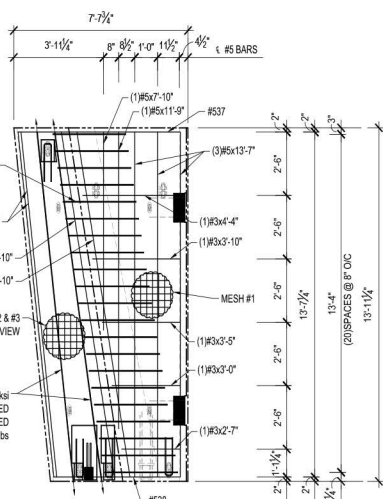
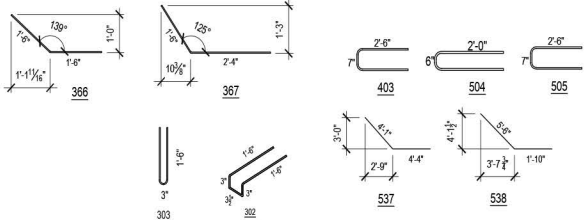
- 1 REINFORCEMENT SHALL BE "BACKS BACK A MIN. OF 7" FROM EDGE OF PRECAST UNLESS OTHERWISE NOTED.
- 2 ALL W.W. IS CONTINGUOUS THROUGHOUT PERIMETER OF REINFORCING UNLESS OTHERWISE NOTED.
- 3 DIMENSIONS FOR HARDWARE ARE TAKEN FROM CENTERLINE UNLESS OTHERWISE NOTED.



**TOP VIEW (REINFORCING)**



**MESH #1 (REINFORCING)**



**FORM VIEW (REINFORCING)**

**REINFORCEMENT TOTALS**

QTY.	DESCRIPTION	TOTALS
302	#3 BENT BAR	15'-2" LF
303	#3 BENT BAR	32'-8" LF
366	#1 BENT BAR	63'-0" LF
367	#3 BENT BAR	80'-8" LF
403	#4 BENT BAR	5'-7" LF
504	#5 BENT BAR	9'-0" LF
505	#5 BENT BAR	5'-7" LF
537	#5 BENT BAR	8'-5" LF
538	#5 BENT BAR	7'-4" LF
1	#3x2-7"	2'-7" LF
1	#3x2-0"	3'-0" LF
1	#3x3-5"	3'-5" LF
1	#3x3-10"	3'-10" LF
1	#2x4-4"	4'-4" LF
4	#4x2-0"	8'-0" LF
4	#4x4-0"	16'-0" LF
2	#4x13-9"	27'-8" LF
4	#4x13-10"	55'-4" LF
1	#5x7-10"	7'-10" LF
1	#5x11-9"	11'-9" LF
3	#5x13-7"	40'-9" LF
MESH #1	1 LVR. #6xW4 @W4 @ WWF 4'-1" x 13'-7" (OUT)	40 8F
MESH #2	1 LVR. #6xW4 @W4 @ WWF 4'-3" (BENT) x 13'-7"	58 5F
MESH #3	1 LVR. #6xW4 @W4 @ WWF 4'-10" (BENT) x 13'-7"	55 5F

**REVISED**  
4:56 pm, Sep 10, 2015

**PLEASE SEE SHEET 1 OF 4 FOR FINISHES**

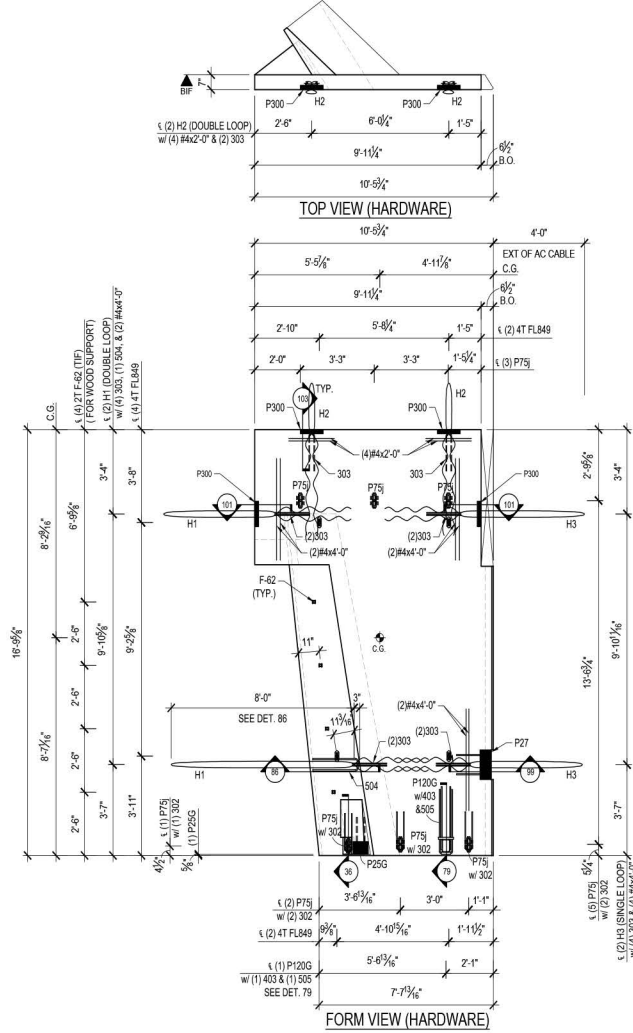
- 1 UNIT WT. OF CONCRETE = 150 pcf
- 2 RELEASE CONCRETE STRENGTH = 3500 PSI
- 3 28 DAY CONCRETE STRENGTH = 5000 PSI
- 4 REINFORCING STEEL ASTM #60 GRADE 60
- 5 W.W. STEEL ASTM A185

DRWN: SF	CU. YD.
DATE: 7/14/15	WEIGHT:
CHKR: ----	SQ. FT.:
DATE: ----	JOB #: 14248

NO.	DATE	DESCRIPTION
REVISIONS		

QUANTITY	PIECE MARK
1	P166r1

THESE DRAWINGS ARE THE SOLE PROPERTY OF SAFE PRECAST COMPANY AND SHALL NOT BE REPRODUCED IN WHOLE OR IN PART BY ANY OTHER INDUSTRY FOR USE ON ANY OTHER PROJECTS WITHOUT THE EXPRESS WRITTEN PERMISSION OF SAFE PRECAST COMPANY.



PRODUCTION NOTES  
 1 REINFORCING STEEL SHALL BE "A" GRADE WITH A MIN. OF 7 FROM EDGE OF PRECAST UNLESS OTHERWISE NOTED  
 2 R.W. IS CONTINGUOUS THROUGHOUT PERIMETER OF REINFORCING UNLESS OTHERWISE NOTED. MAX. W/RE. IS 1/2" (SEE TABLE)  
 3 DIMENSIONS FOR HARDWARE ARE TAKEN FROM CENTERLINE UNLESS OTHERWISE NOTED

SEE SHEET 2 OF 4  
 FOR DETAILS, TOP & SECTIONS  
 PLEASE SEE SHEET 3 OF 4  
 FOR REINFORCING

ITEM		QTY	DESCRIPTION
P255	1	1	L 6x4x3/8"x0-8" w/2) 1/2" dia x 4" H.C.A. & (2) #4x1-5"
P275	1	1	L 5/8x3/8"x1-2" w/ (2) 1/2" DIA. x3" H.A.S. & (2) #4x1-5"
P300	4	1	L 2x2x1/4"x1-0" w/ (2) 3/8" DIA. x3" H.A.S.
P75	6	1	PBA 638S ADJUSTABLE INSERT (J&J IN38)
F-62	4	1	F-62 FLOATED THIN SLAB FERRULE INSERT 7/8" x 3/4"
P120G	1	1	HSS 6"x4"x1/4"x0-11 1/2" w/ (4) #6 x2-2" A706 BARS (1) L1"x1"x1/4"x0-8" (1) PL 1"x3"x5"
4T FL849	4	1	4T 4"x4" LONG P-94 FLEET LIFT T-ANCHOR
H1	2	2	#8 AIRCRAFT CABLE (24'-0" each) w/ (2) 3/8" (DOUBLE LOOP)
H2	2	2	#8 AIRCRAFT CABLE (18'-0" each) w/ (2) 3/8" (DOUBLE LOOP)
H3	2	2	#8 AIRCRAFT CABLE (20'-0" each) w/ (2) 3/8" (SINGLE LOOP)

**APPROVED**  
 By Kate Akulova at 4:02 pm, Jul 28, 2015

COLOR/FINISH	
◆ FINISH #1	GP/K2971K POLISHED
◆ FINISH #2	GP/K2971K FORM
TOP IN FORM FINISH	
◆	FLOAT FINISH - GRAY
◆	GP/K2971K SB-L

- 1 UNIT WL OF CONCRETE = 150 pcf
- 2 RELEASE CONCRETE STRENGTH = 3500 PSI
- 3 28 DAY CONCRETE STRENGTH = 3000 PSI
- 4 REINFORCING STEEL ASTM A603 GRADE 60
- 5 W/WF STEEL ASTM A188

DRWN: SLN	CU. YD. 3.69
DATE: 07/25/15	WEIGHT: 14,921#
CHKR: CRR	SQ. FT.: 166
DATE: 7-27-15	JOB #: 14248

NO.	DATE	DESCRIPTION	QUANTITY	PIECE MARK
1			1	P167







