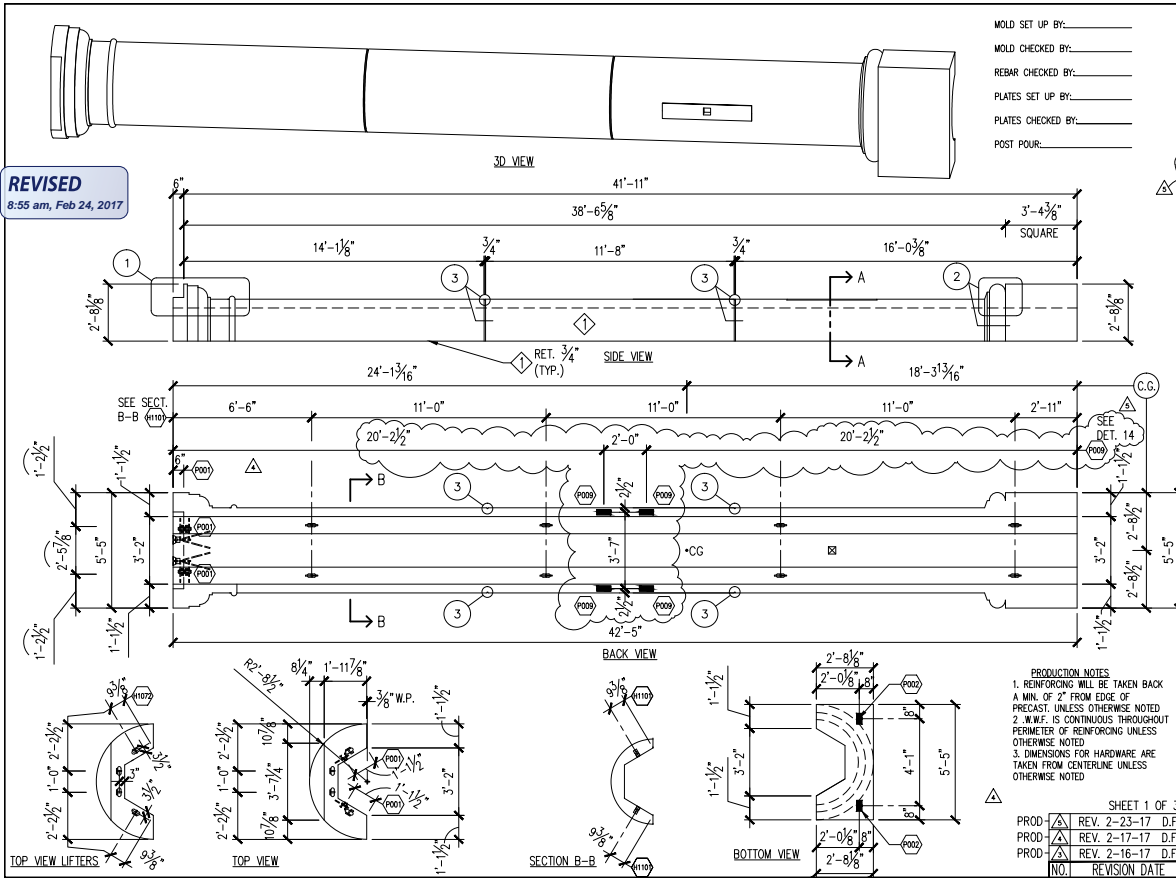


REVISED
8:55 am, Feb 24, 2017



HARDWARE (GALVANIZED)		
MARK	QTY	DESCRIPTION
P001	2	PSA #6035 W/NUT & (2)#3 BARS X 1'-0" LG
P002	2	PL-3/8" X 3" X 6" LONG W/(2) 1/2" X 4" HCA, 1/4" HOLE & 3/4" FERRULE NUT
P009	4	PL-3/8" X 3" X 8" LONG W/(2) 1/2" X 6" HCA, (bent)

ERECTION/HANDLING		
MARK	QTY	DESCRIPTION
H1072	4	4-TON DS Edge Lift-P-92HP W/Shear Plate & Tension Bar(#FL175L)
H1101	8	4T x 4 1/2" DS T Anchor P-94 (#FL848)

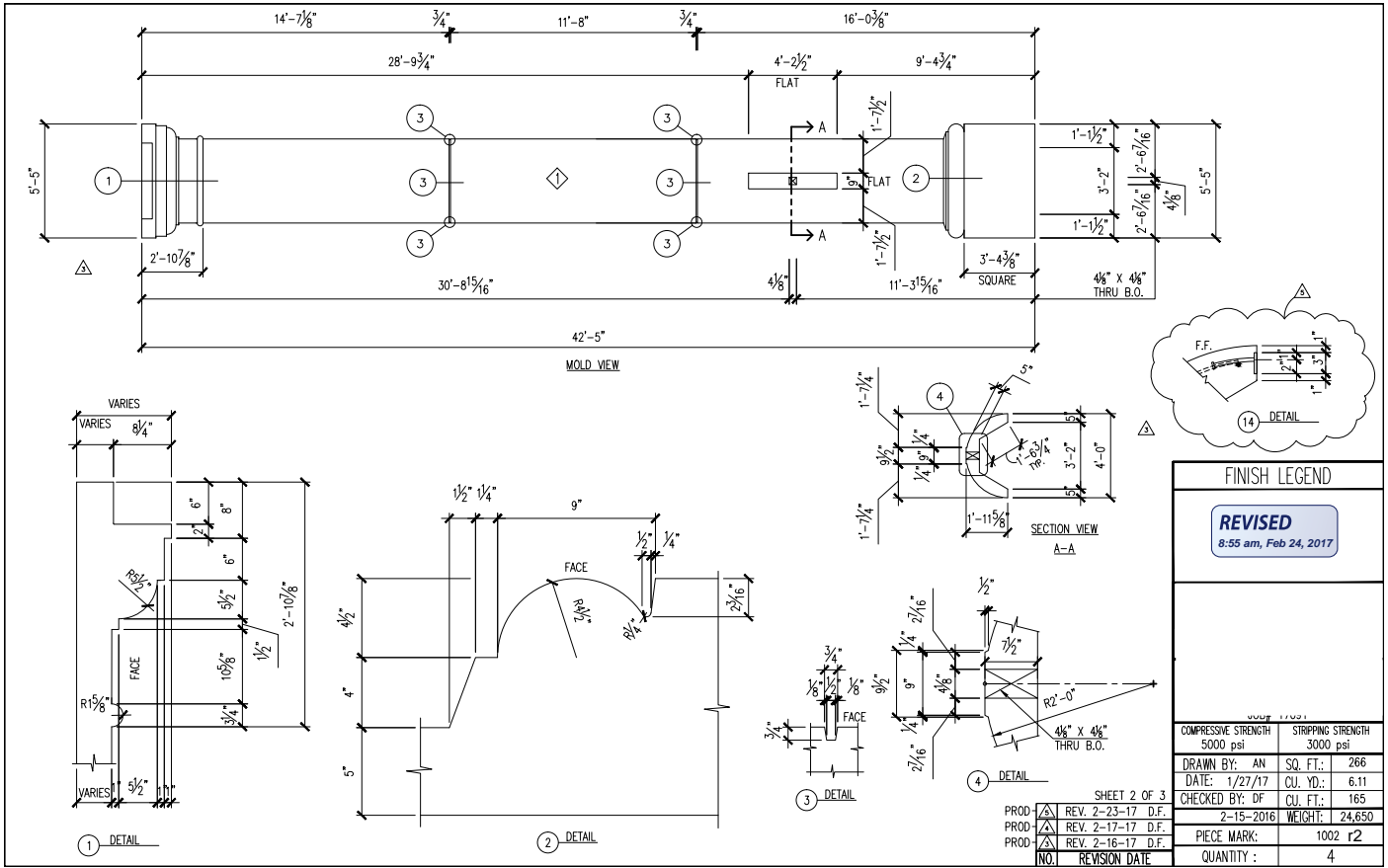
FINISH LEGEND	
◊	#GPK 3224 SB L

PRODUCTION NOTES
1. REINFORCING WILL BE TAKEN BACK A MIN. OF 2" FROM EDGE OF PRECAST. UNLESS OTHERWISE NOTED
2. W.W.F. IS CONTINUOUS THROUGHOUT PERIMETER OF REINFORCING UNLESS OTHERWISE NOTED
3. DIMENSIONS FOR HARDWARE ARE TAKEN FROM CENTERLINE UNLESS OTHERWISE NOTED

SHEET 1 OF 3

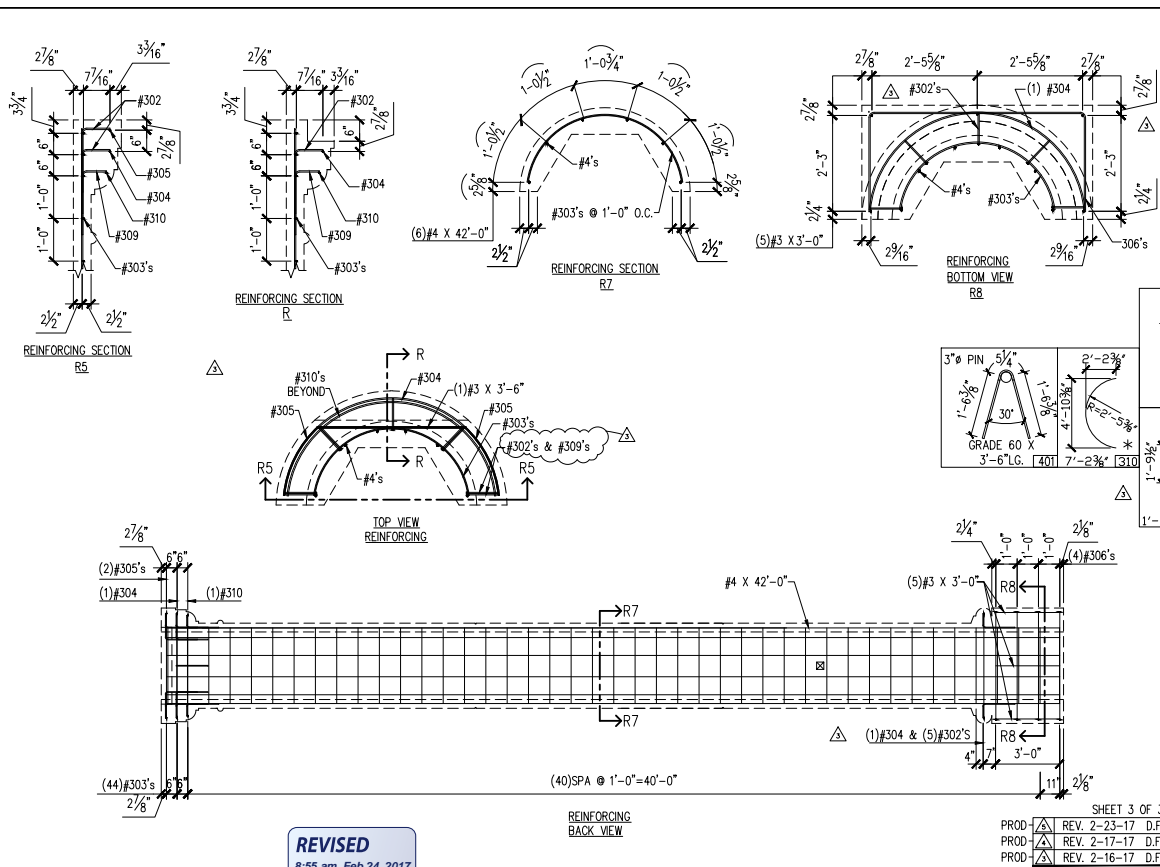
PROD	REV. 2-23-17	D.F.
PROD	REV. 2-17-17	D.F.
PROD	REV. 2-16-17	D.F.
NO.	REVISION DATE	

COMPRESSIVE STRENGTH	STRIPPING STRENGTH
5000 psi	3000 psi
DRAWN BY: AN	SQ. FT.: 266
DATE: 1/27/17	CU. YD.: 6.11
CHECKED BY: DF	CU. FT.: 165
2-15-2016	WEIGHT: 24,650
PIECE MARK:	1002 r2
QUANTITY :	4

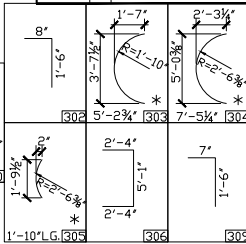


FINISH LEGEND	
REVISED 8:55 am, Feb 24, 2017	
COMPRESSIVE STRENGTH 5000 psi	STRIPPING STRENGTH 3000 psi
DRAWN BY: AN	SQ. FT.: 266
DATE: 1/27/17	CU. YD.: 6.11
CHECKED BY: DF	WEIGHT: 24,650
PIECE MARK:	1002 r2
QUANTITY :	4

SHEET 2 OF 3
 PROD. REV. 2-23-17 D.F.
 PROD. REV. 2-17-17 D.F.
 PROD. REV. 2-16-17 D.F.
 NO. REVISION DATE



REINFORCING		
MARK	QTY	DESCRIPTION
302	14	#3 BENT BAR
303	44	#3 BENT BAR
304	2	#3 BENT BAR
305	2	#3 BENT BAR
306	4	#3 BENT BAR
309	5	#3 BENT BAR
310	1	#3 BENT BAR
	5	#3 X 3'-0"
	1	#3 X 3'-6"
	6	#4 X 42'-0"
401	4	#4 BENT BAR



(*) DIMS TO CL OF BARS

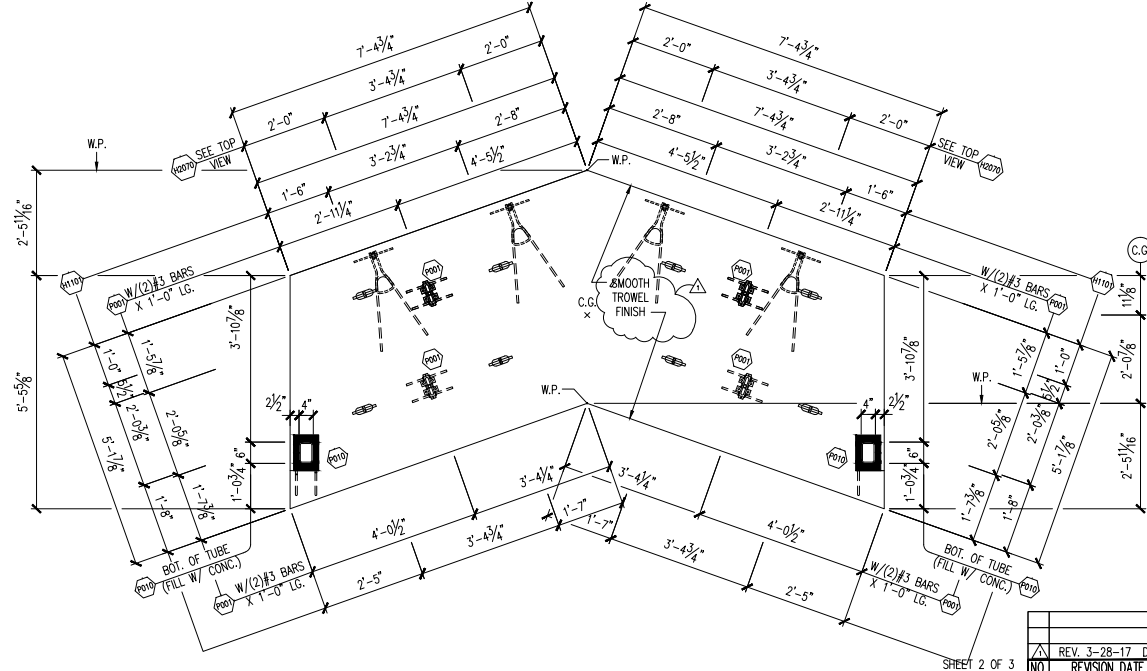
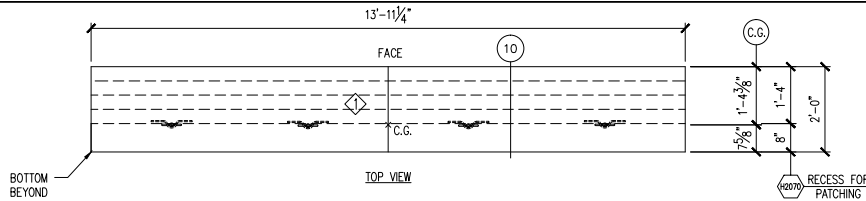
SPECIFICATION	
COMPRESSION STRENGTH	5000 psi
STRIPPING STRENGTH	3000 psi
DRAWN BY:	AN SQ. FT.: 266
DATE:	1/27/17 CU. YD.: 6.11
CHECKED BY:	DF CU. FT.: 165
DATE:	2-15-2016 WEIGHT: 24,650
PIECE MARK:	1002 r2
QUANTITY:	4

REVISED
8:55 am, Feb 24, 2017

SHEET 3 OF 3
 PROD. REV. 2-23-17 D.F.
 PROD. REV. 2-17-17 D.F.
 PROD. REV. 2-16-17 D.F.
 NO. REVISION DATE

REVISED

2:42 pm, Mar 28, 2017



HARDWARE (GALVANIZED)

MARK	QTY	DESCRIPTION
P001	4	PSA #6035 W/NUT (GALV.) & #3 REINFORCING
P010	2	PL 1/2" X 7" X 10" LG. W/(6) 1/2" DIA. X 6" HCA, @ 4" O.C. (2) #4 A706 BAR X 1'-6" (BENT) & HSS 6" X 4" X 3/8" X 0'-10" LG.

ERECTION/HANDLING

MARK	QTY	DESCRIPTION
H2070	4	DS-T3A 1" X 12" COIL INSERTS W/SHEAR & #401 TENSION BAR (LOOP SIZE .440")
H1101	4	4T X 4 1/2" DS T ANCHOR P-94 (#FL848)

- PRODUCTION NOTES**
1. REINFORCING WILL BE TAKEN BACK A MIN. OF 2" FROM EDGE OF PRECAST. UNLESS OTHERWISE NOTED.
 2. W.P.F. IS CONTINUOUS THROUGHOUT PERIMETER OF REINFORCING UNLESS OTHERWISE NOTED.
 3. DIMENSIONS FOR HARDWARE ARE TAKEN FROM CENTERLINE UNLESS OTHERWISE NOTED.

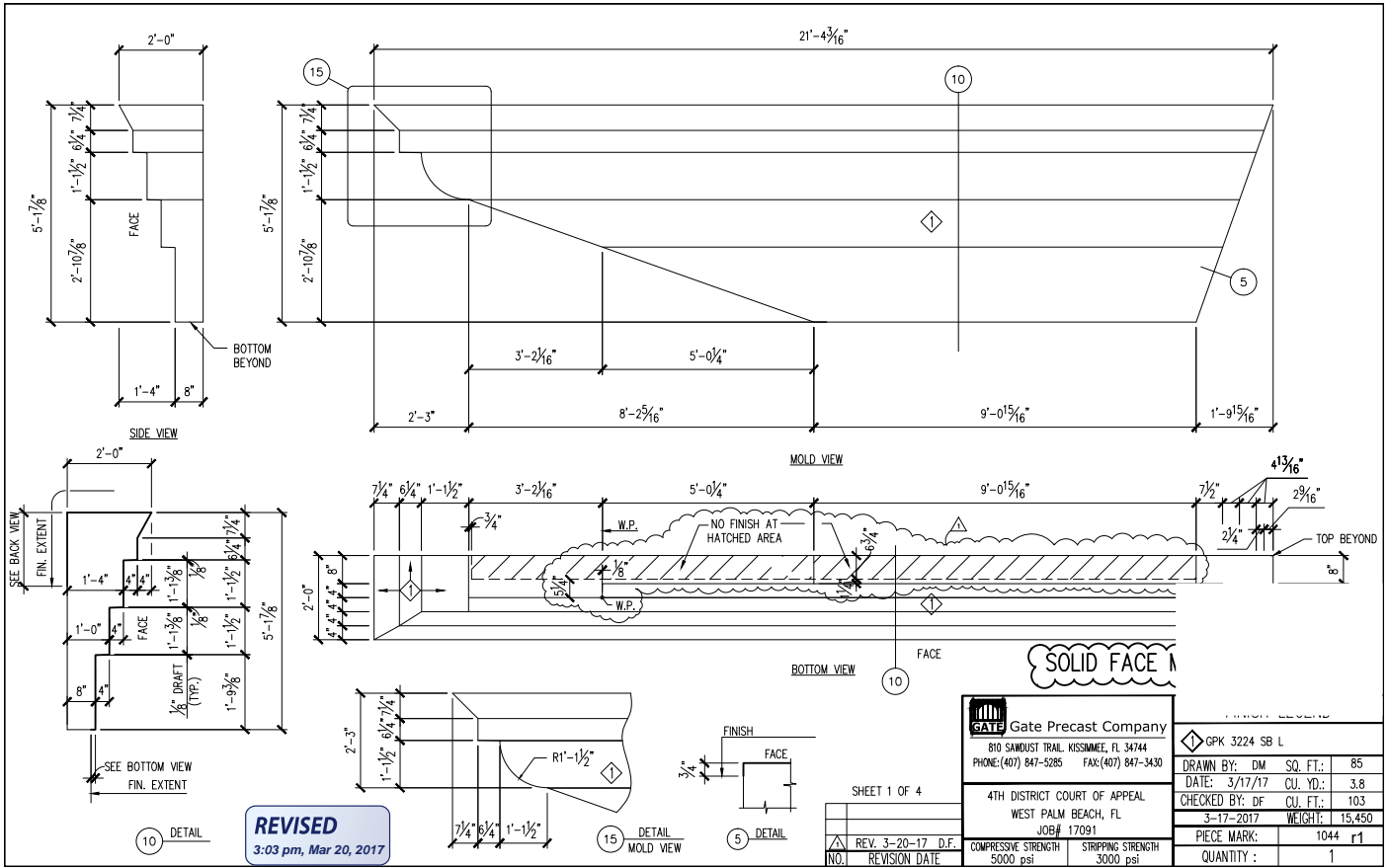
FINISH LEGEND

◆	GPK 3224 SB L
---	---------------

COMPRESSIVE STRENGTH	5000 psi	STRIPPING STRENGTH	3000 psi
DRAWN BY:	DM	SQ. FT.:	77
DATE:	2/22/17	CU. YD.:	3.18
CHECKED BY:	DF	CU. FT.:	86
PIECE MARK:	1042	WEIGHT:	12,875
QUANTITY:			1

REV. 3-28-17	D.F.
NO.	REVISION DATE

SHEET 2 OF 3



REVISED
3:03 pm, Mar 20, 2017

GATE Gate Precast Company
810 SANDUST TRAIL, KISSIMEE, FL 34744
PHONE: (407) 847-5285 FAX: (407) 847-3430

4TH DISTRICT COURT OF APPEAL
WEST PALM BEACH, FL
JOB# 17091

COMPRESSIVE STRENGTH	5000 psi
STRIPPING STRENGTH	3000 psi
PIECE MARK:	1044 r1
QUANTITY:	1

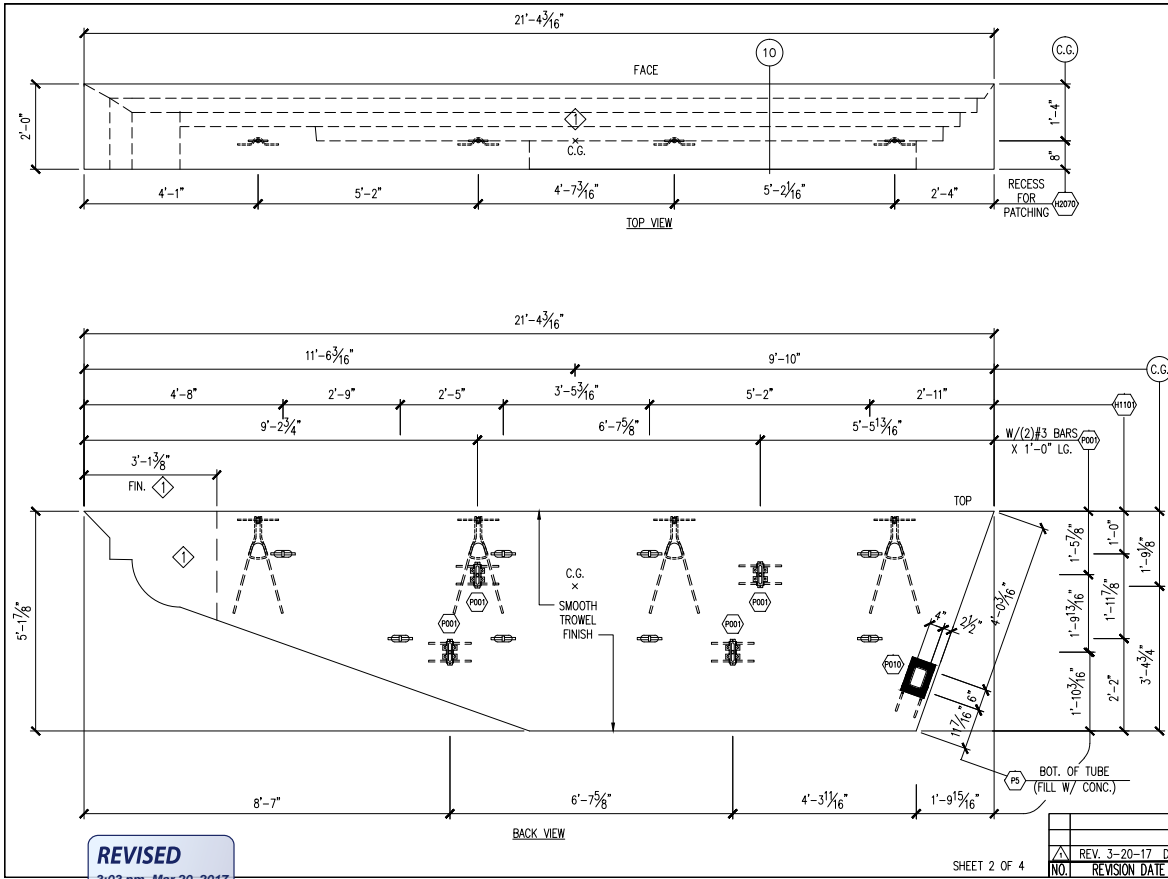
SHEET 1 OF 4

NO.	REV.	REVISION DATE	D.F.
	3-20-17		D.F.

10 DETAIL

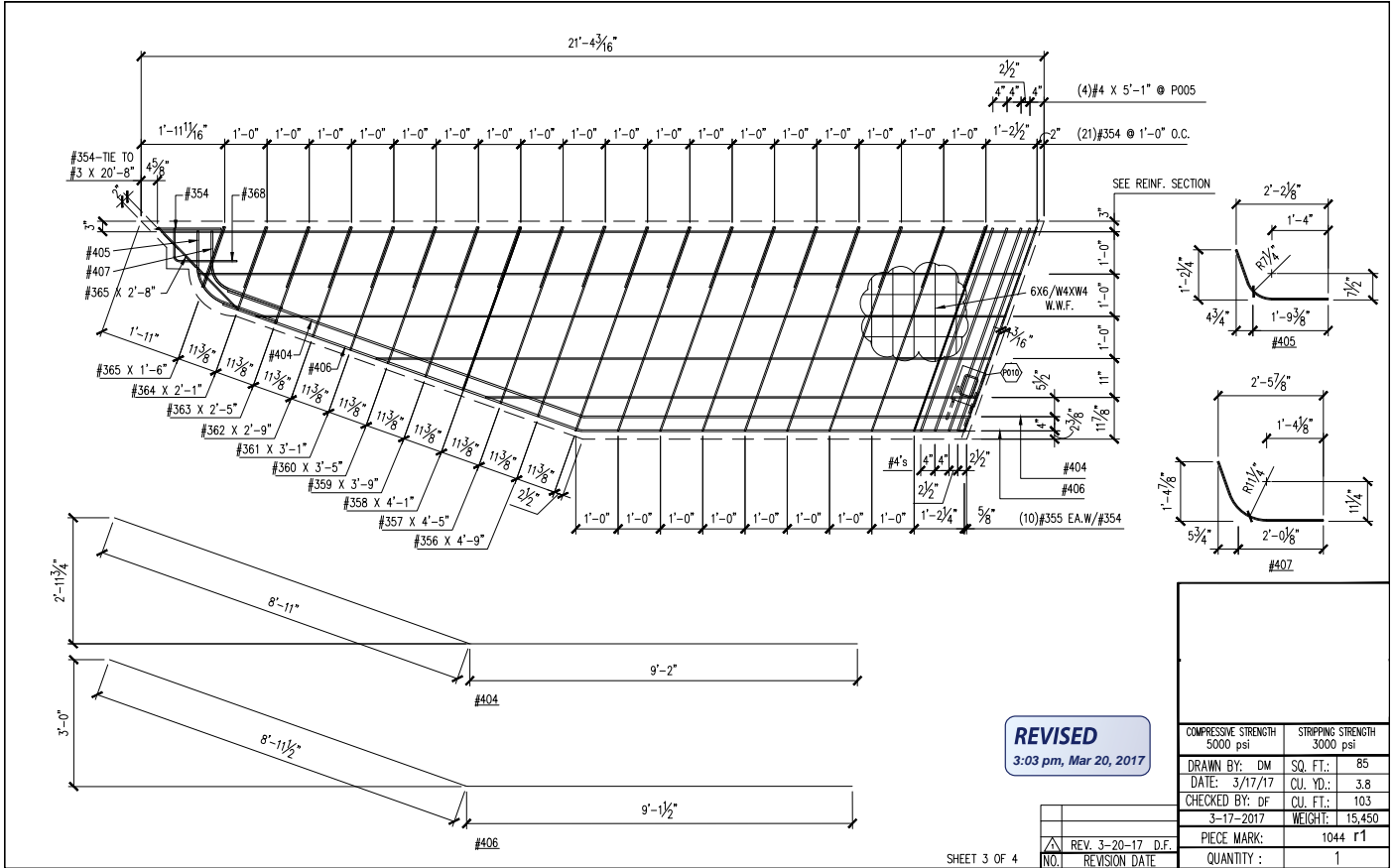
15 DETAIL MOLD VIEW

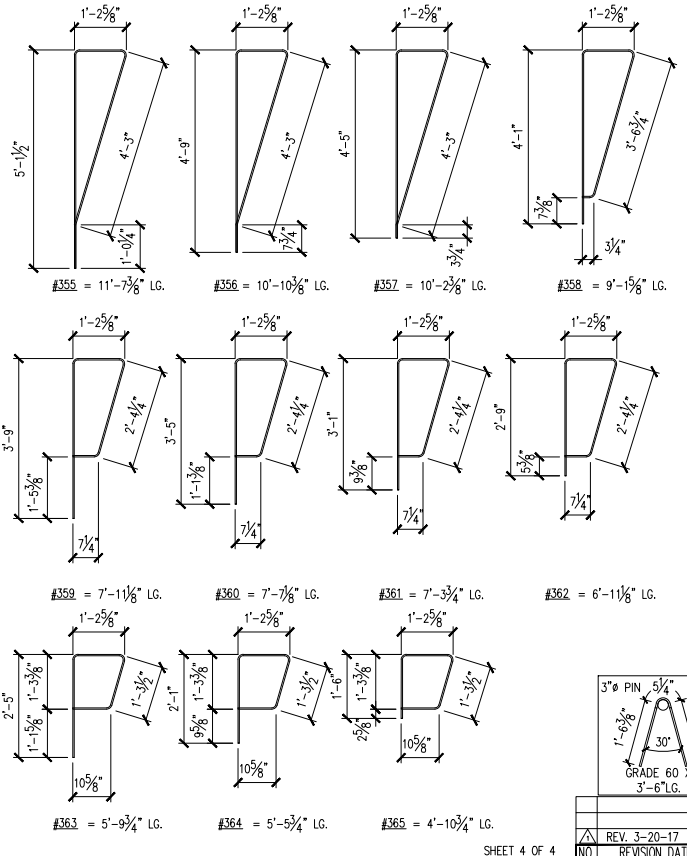
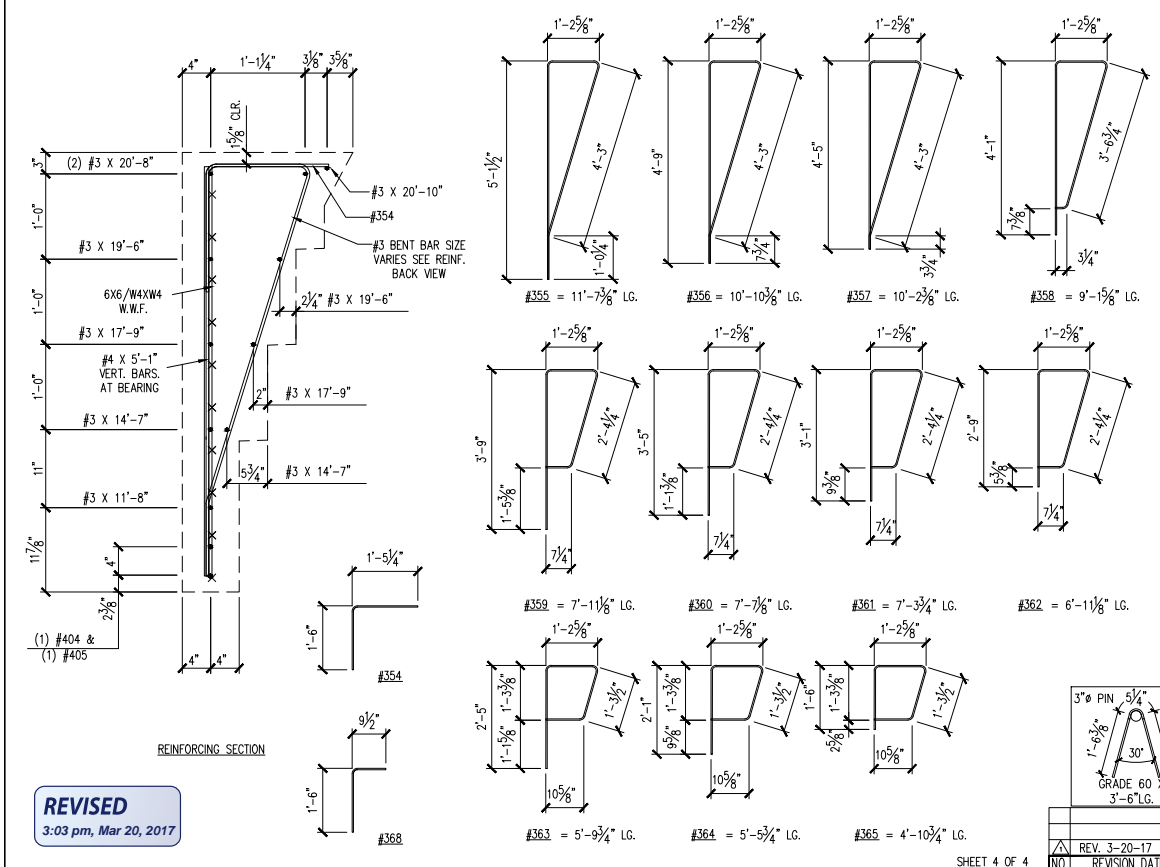
5 DETAIL



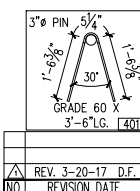
HARDWARE (GALVANIZED)		
MARK	QTY	DESCRIPTION
P001	4	PSA #6035 W/NUT (GALV.) & #3 REINFORCING
P010	1	PL 1/2" X 7" X 10" LG. W/(6) 1/2" DIA. X 6" HCA, @ 4" O.C., (2)#4 A706 BAR X 1'-6" (BENT) & HSS 6" X 4" X 3/8" X 0'-10" LG.
ERECTION/HANDLING		
MARK	QTY	DESCRIPTION
H2070	4	DS-T3A 1" X 12" COIL INSERTS W/SHEAR & #401 TENSION BAR (LOOP SIZE .440")
H1101	8	4T X 4 1/2" DS T ANCHOR P-94 (#FL848)
PRODUCTION NOTES		
1. REINFORCING WILL BE TAKEN BACK A MIN. OF 2" FROM EDGE OF PRECAST. UNLESS OTHERWISE NOTED.		
2. W.W.F. IS CONTINUOUS THROUGHOUT PERIMETER OF REINFORCING UNLESS OTHERWISE NOTED.		
3. DIMENSIONS FOR HARDWARE ARE TAKEN FROM CENTERLINE UNLESS OTHERWISE NOTED.		
FINISH LEGEND		
◇ GPK 3224 SB L		
COMPRESSIVE STRENGTH	STRIPPING STRENGTH	
5000 psi	3000 psi	
DRAWN BY: DM	SQ. FT.:	85
DATE: 3/17/17	CU. YD.:	3.8
CHECKED BY: DF	CU. FT.:	103
PIECE MARK:	WEIGHT:	15,450
NO.	REVISION DATE	QUANTITY :
△ REV. 3-20-17 D.F.		1

REVISED
3:03 pm, Mar 20, 2017

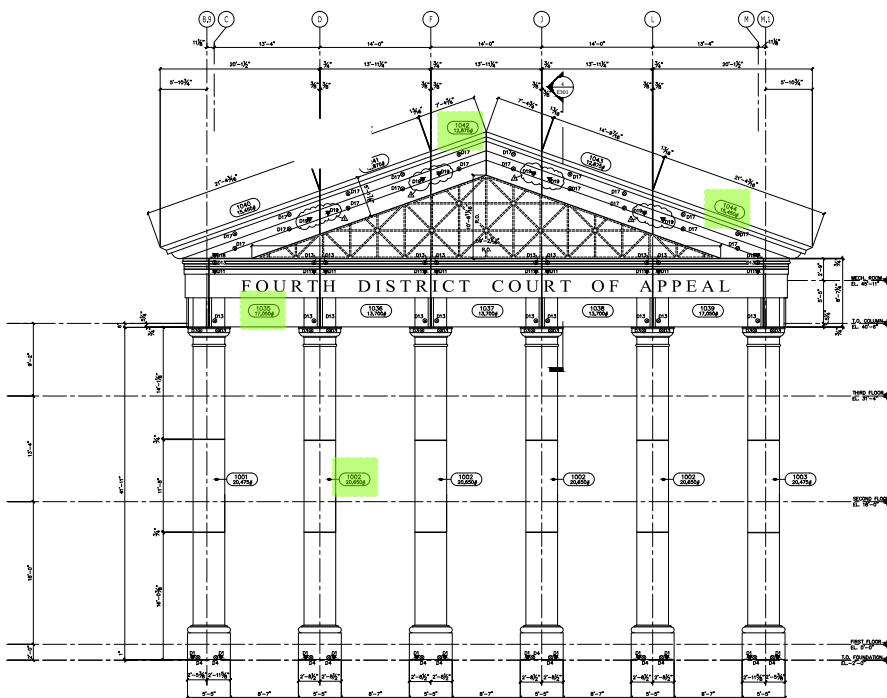




REINFORCING		
MARK	QTY	DESCRIPTION
354	22	#3 BENT BAR
355	10	#3 BENT BAR
356	1	#3 BENT BAR
357	1	#3 BENT BAR
358	1	#3 BENT BAR
359	1	#3 BENT BAR
361	1	#3 BENT BAR
362	1	#3 BENT BAR
363	1	#3 BENT BAR
364	1	#3 BENT BAR
365	1	#3 BENT BAR
366	1	#3 BENT BAR
367	1	#3 BENT BAR
401	4	#4 BENT BAR
404	1	#4 BENT BAR
405	1	#4 BENT BAR
406	1	#4 BENT BAR
407	1	#4 BENT BAR
1		#3 X 11'-8"
2		#3 X 14'-7"
2		#3 X 17'-9"
2		#3 X 19'-6"
2		#3 X 20'-8"
1		#3 X 20'-10"
4		#4 X 5'-1"
1		6X6/W4XW4 W.W.F.
COMPRESSION STRENGTH		STRIPPING STRENGTH
5000 psi		3000 psi
DRAWN BY: DM	SQ. FT.: 85	
DATE: 3/17/17	CU. YD.: 3.8	
CHECKED BY: DF	CU. FT.: 103	
3-17-2017		WEIGHT: 15,450
PIECE MARK:		1044 r1
NO.	REVISION DATE	QUANTITY: 1

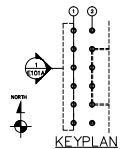


REVISED
3:03 pm, Mar 20, 2017



1 ELEVATION
E101A BEST VIEW ONE LINE 1

FIELD & FILE SET
3-10-2017



REVISION DESCRIPTION	DATE
ISSUED FOR APPROVAL	2-1-17
FIELD & FILE SET	3-10-17

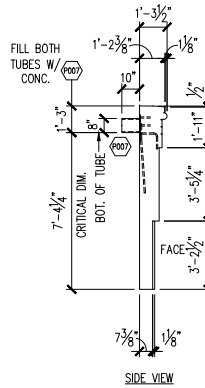
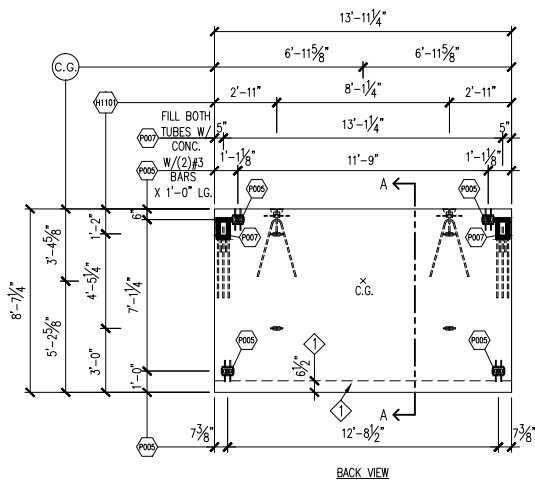
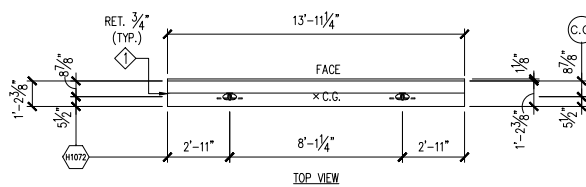
GATE PRECAST COMPANY
 3000 Highway 101
 Houston, TX 77060
 TEL: (281) 342-2222
 FAX: (281) 342-2222
 WWW.GATEPC.COM

PCET
 PRECAST CONCRETE ENGINEERING TECHNOLOGISTS

James O. French, P.E.
 387 Loop West, Suite 100, Houston, TX 77057
 P.E. 00033

4th District court of Appeal
 State Park Station, TX

CONTRACT NO. 17091
 PROJECT TITLE: Alternate Elevation
 SHEET NO. E101A



MOLD SET UP BY: _____
 MOLD CHECKED BY: _____
 REBAR CHECKED BY: _____
 PLATES SET UP BY: _____
 PLATES CHECKED BY: _____
 POST POUR: _____

HARDWARE (GALVANIZED)		
MARK	QTY	DESCRIPTION
P005	4	MULTI-DIRECTIONAL SLOTTED INSERT #6MD275 W/ #3 REINFORCING
P007	2	PL 1/2" X 8" X 1'-0" LONG W/(4) 3/4" DIA. X 6" HCA @ 3' O.C., (2) #6 A706 BARS X 1'-6" (BENT) & (3) #6 A706 BARS X 3'-4" LG. & HSS 8" X 4" X 3/8" X 10" LONG

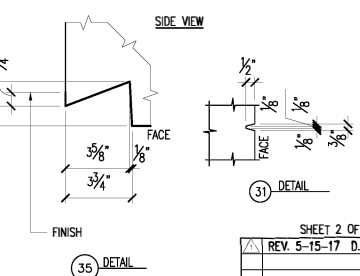
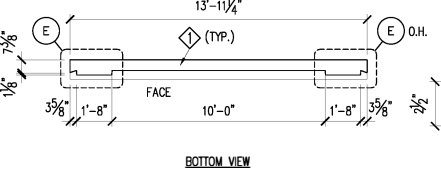
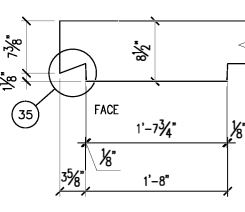
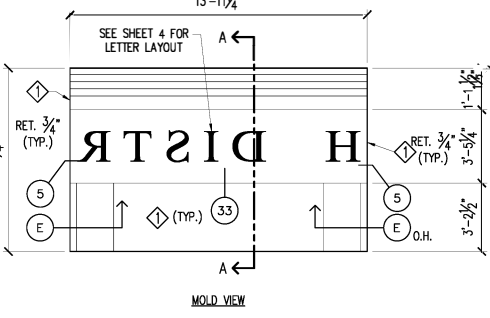
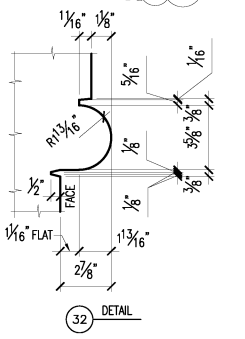
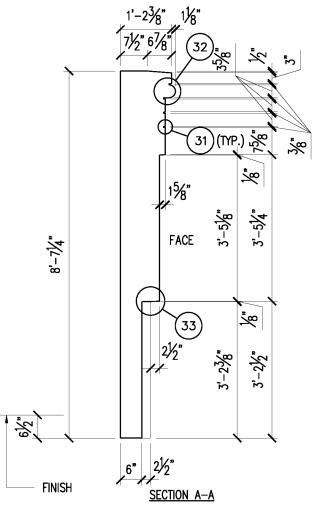
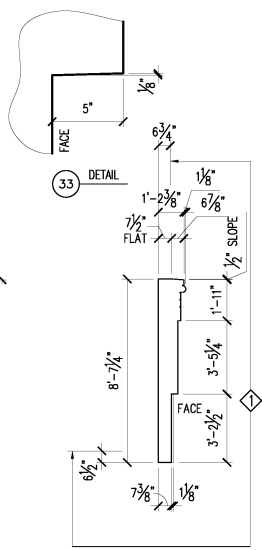
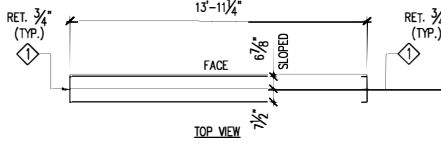
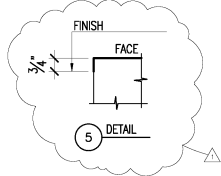
ERECTION/HANDLING		
MARK	QTY	DESCRIPTION
H1072	2	4-TON DS Edge Lift-P-92HP W/Shear Plate & Tension Bar (#FL175L)
H1101	16	4T x 4 1/4" DS T Anchor P-94 (#FL848)

FINISH LEGEND	
	#GPK 3224 SB L

COMPRESSIVE STRENGTH	5000 psi	STRIPPING STRENGTH	3000 psi
DRAWN BY:	DM	SQ. FT.:	119
DATE:	3/27/17	CU. YD.:	3.38
CHECKED BY:	DF	CU. FT.:	91
	3-30-2017	WEIGHT:	13,700
PIECE MARK:			1036
QUANTITY :			1

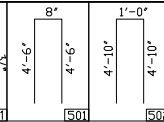
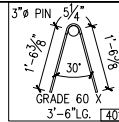
SHEET 1 OF 4

NO.	REVISION DATE
△	REV. 5-15-17 D.F.

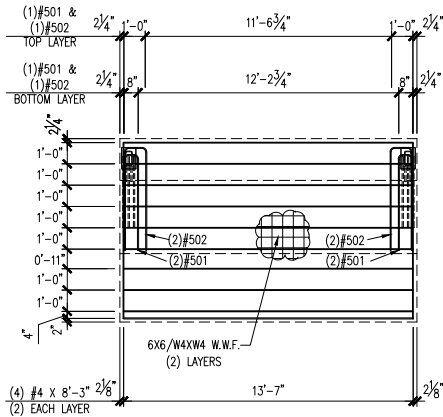
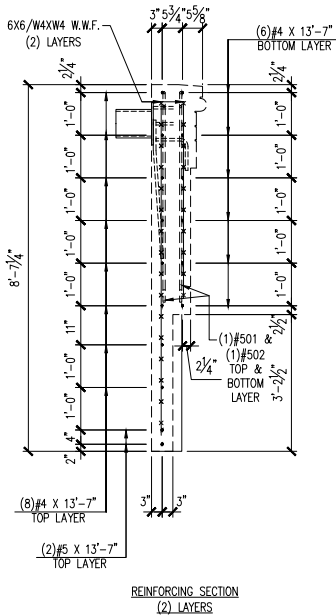


FINISH LEGEND	
	#GPK 3224 SB L
COMPRESSION STRENGTH	5000 psi
STRIPPING STRENGTH	3000 psi
DRAWN BY:	DM
SO. FT.:	119
DATE:	3/27/17
CJ. YD.:	3.38
CHECKED BY:	DF
CJ. FT.:	91
PIECE MARK:	1036
WEIGHT:	13,700
QUANTITY :	1

SHEET 2 OF 4
 REV. 5-15-17 D.F.
 NO. REVISION DATE



REINFORCING		
MARK	QTY	DESCRIPTION
401	2	#4 BENT BAR
501	4	#5 BENT BAR
502	4	#5 BENT BAR
	8	#3 X 1'-0"
	4	#4 X 8'-3"
	14	#4 X 13'-7"
	2	#5 X 13'-7"
	2	6X6/W4XW4 W.W.F.

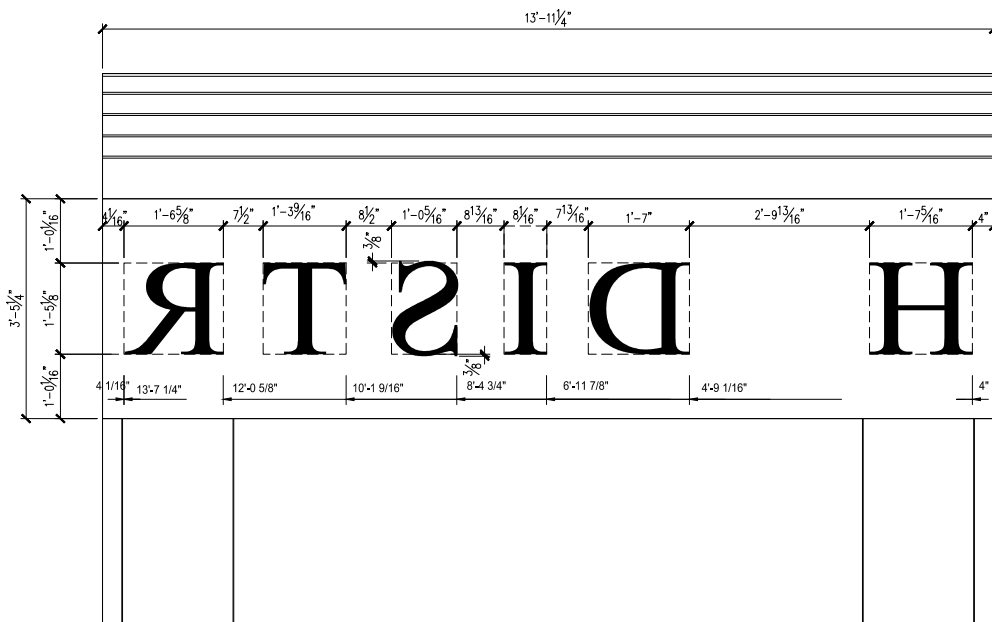


(* DIMS TO CL OF BARS)

NO.		REVISION DATE
△	REV. 5-15-17	D.F.

SHEET 3 OF 4	
DRAWN BY: DM	SQ. FT.: 119
DATE: 3/27/17	CU. YD.: 3.38
CHECKED BY: DF	CU. FT.: 91
PIECE MARK:	WEIGHT: 13,700
QUANTITY :	1

COMPRESSIVE STRENGTH	STRIPPING STRENGTH
5000 psi	3000 psi



MOLD VIEW-LETTER LAYOUT

SHEET 4 OF 4

△	REV. 5-15-17	D.J.F.
NO.	REVISION DATE	

MOLD # 1 (A2)	
COMPRESSIVE STRENGTH 5000 psi	STRIPPING STRENGTH 3000 psi
DRAWN BY: DM	SQ. FT.: 119
DATE: 3/27/17	CU. YD.: 3.38
CHECKED BY: DF	CU. FT.: 91
3-30-2017	WEIGHT: 13,700
PIECE MARK:	1036
QUANTITY :	1