

FORM VIEW
REAR FACE

GENERAL NOTES

- ▲ = SHIPPING RACKS
- △ = STORAGE DUNNAGE
- △ = SHIPPING & STORAGE RACKS

- GENERAL NOTES:
- -

FINISH NOTES

- △ BRICK/#4882 AE-L
- △ AP WOOD LINER BU AE-L
- △ UNFINISHED
- △ AE-L
- △ FLOAT
- △ STEEL TROWEL
- △ #4882 AE-L

B.F.F. = BACK (from) FRONT FACE

LIFTING		HARDWARE	
MARK	QTY.	MARK	QTY.
2018	8	WF2502	4
2080	4	WF2503	2
		WF2504	4
HARDWARE	2007		2

BENT REINFORCING BARS

MARK	QTY.	MARK	QTY.

ISSUE

FORM	PROD.	DATE
1	03/31/16	
2	04/04/16	
3	04/04/16	
4	04/15/16	
5		

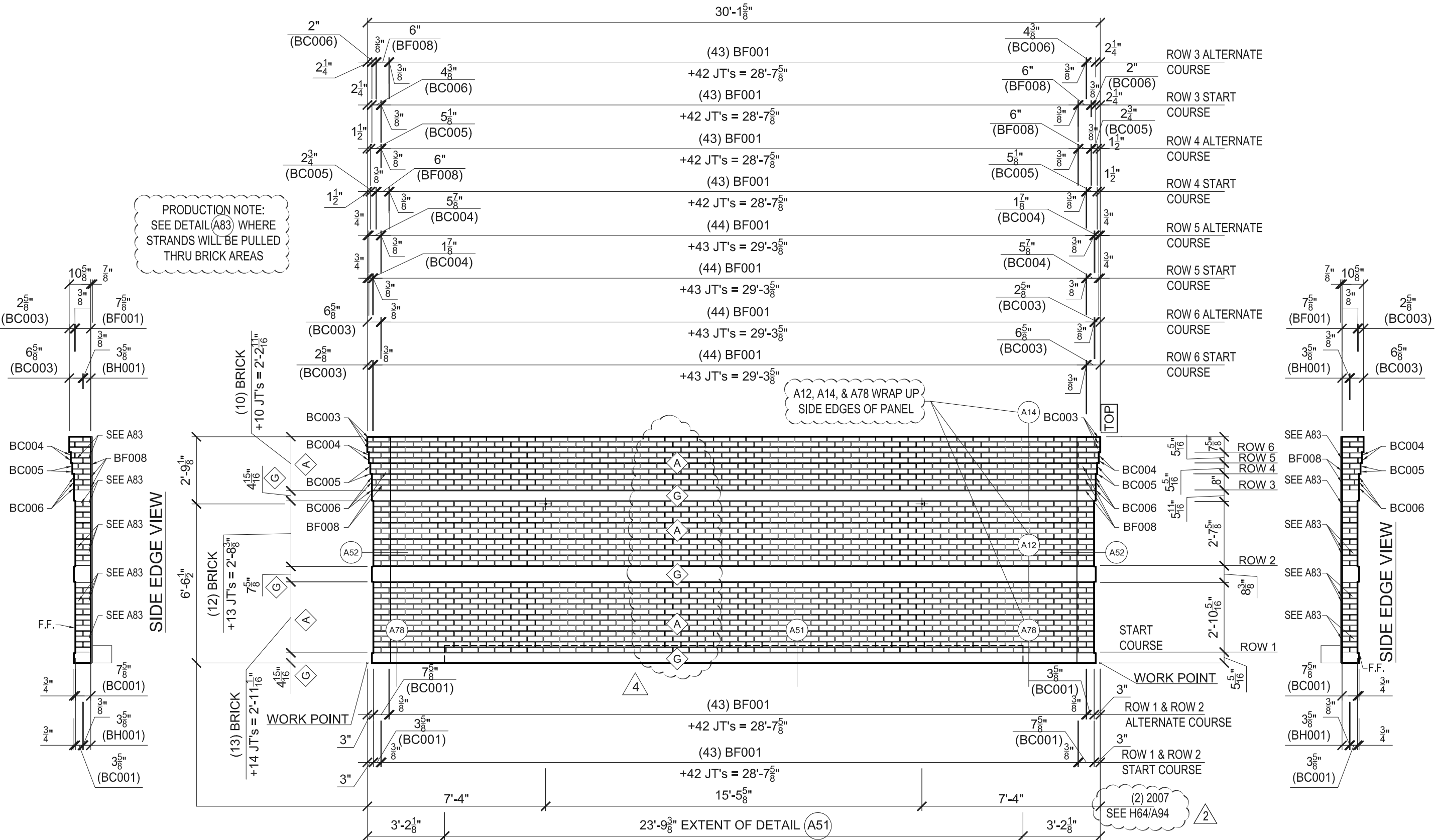
DRAWN BY: PD
CHECKED BY: CS

STRIP STRENGTH :3500 psi
28 DAY : 5000 psi

S.F.: 277
FACE C.Y.: 2.56
BACK-UP C.Y.: 3.36
TOTAL C.Y.: 5.97
WT.: 25,996

NO. REQ'D.: 1

PANEL NO.: WF-11



PRODUCTION NOTE:
SEE DETAIL (A83) WHERE
STRANDS WILL BE PULLED
THRU BRICK AREAS

A12, A14, & A78 WRAP UP
SIDE EDGES OF PANEL

**FORM VIEW
(FRONT FACE)**



GENERAL NOTES

- ▲ = SHIPPING RACKS
 - △ = STORAGE DUNNAGE
 - △ = SHIPPING & STORAGE RACKS
- GENERAL NOTES:**
- 1.
 - 2.

FINISH NOTES

- A - BRICK #4882 AE-L
- B - AP WOOD LINER BU AE-L
- C - UNFINISHED
- D - AE-L
- E - FLOAT
- F - STEEL TROWEL
- G - #4882 AE-L

B.F.F. = BACK (from) FRONT FACE

LIFTING		HARDWARE	
MARK	QTY.	MARK	QTY.

BENT REINFORCING BARS			
MARK	QTY.	MARK	QTY.

ISSUE			
FORM	PROD.	DATE	REVISION
	03/31/16		
1		04/04/16	
2		04/04/16	
3		04/15/16	
4			
5			

DRAWN BY:		PD
CHECKED BY:		CS

STRIP STRENGTH:		
28 DAY:		
S.F.:	FACE C.Y.:	BACK-UP C.Y.:
TOTAL C.Y.:		
WT.:		

NO. REQ'D.: 1

PANEL NO.: WF-11

GENERAL NOTES

- ▲ = SHIPPING RACKS
- △ = STORAGE DUNNAGE
- △ = SHIPPING & STORAGE RACKS

GENERAL NOTES:

-
-

FINISH NOTES

- △ BRICK/#4882 AE-L
- △ AP WOOD LINER BU AE-L
- △ UNFINISHED
- △ AE-L
- △ FLOAT
- △ STEEL TROWEL
- △ #4882 AE-L

B.F.F. = BACK (from) FRONT FACE

LIFTING		HARDWARE	
MARK	QTY.	MARK	QTY.
HARDWARE			

BENT REINFORCING BARS

MARK	QTY.	MARK	QTY.
310	24		

ISSUE

FORM		
PROD.	03/31/16	
1		
2	04/04/16	
3	04/04/16	
4	04/15/16	
5		

DRAWN BY: PD
CHECKED BY: CS

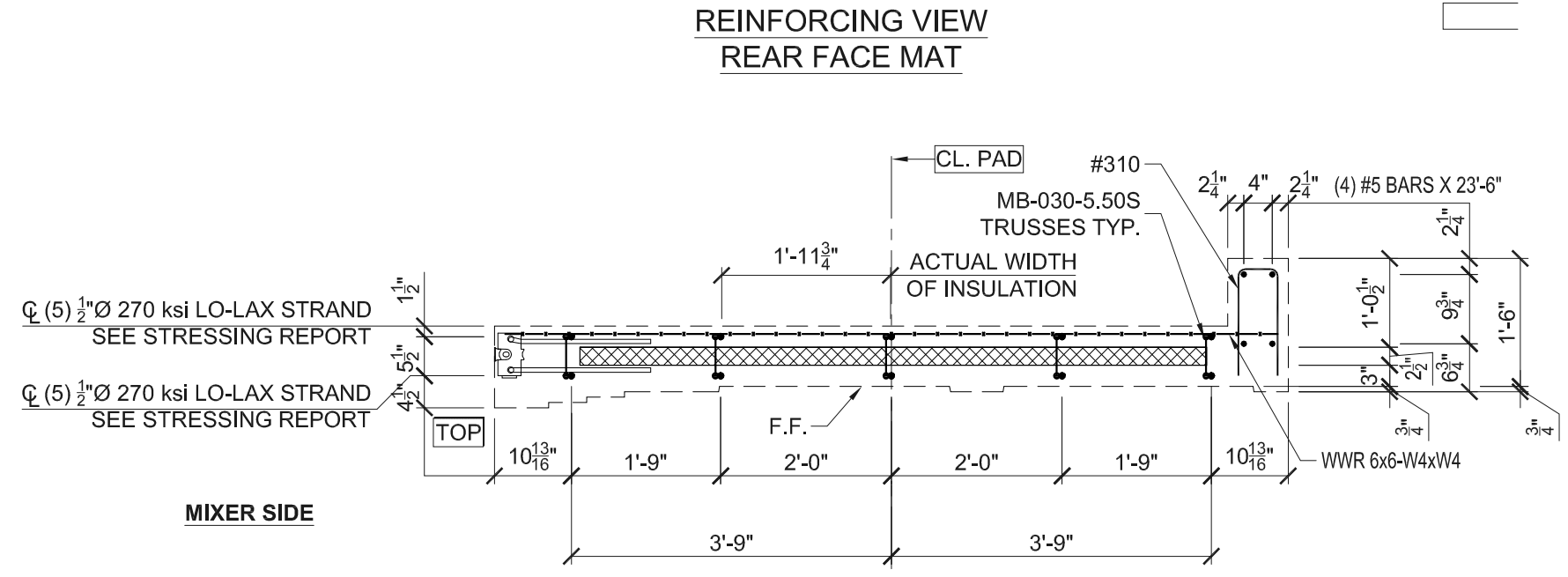
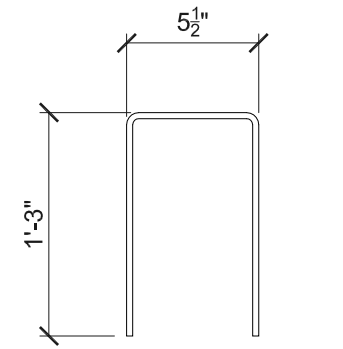
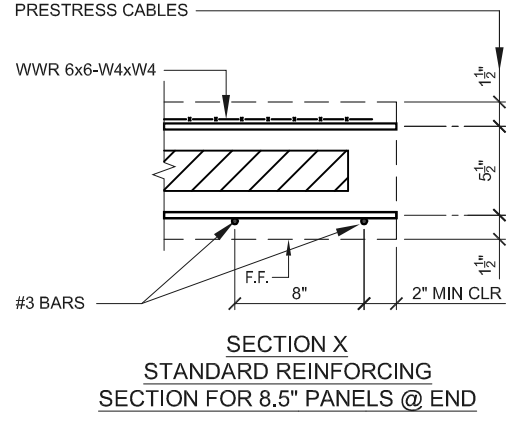
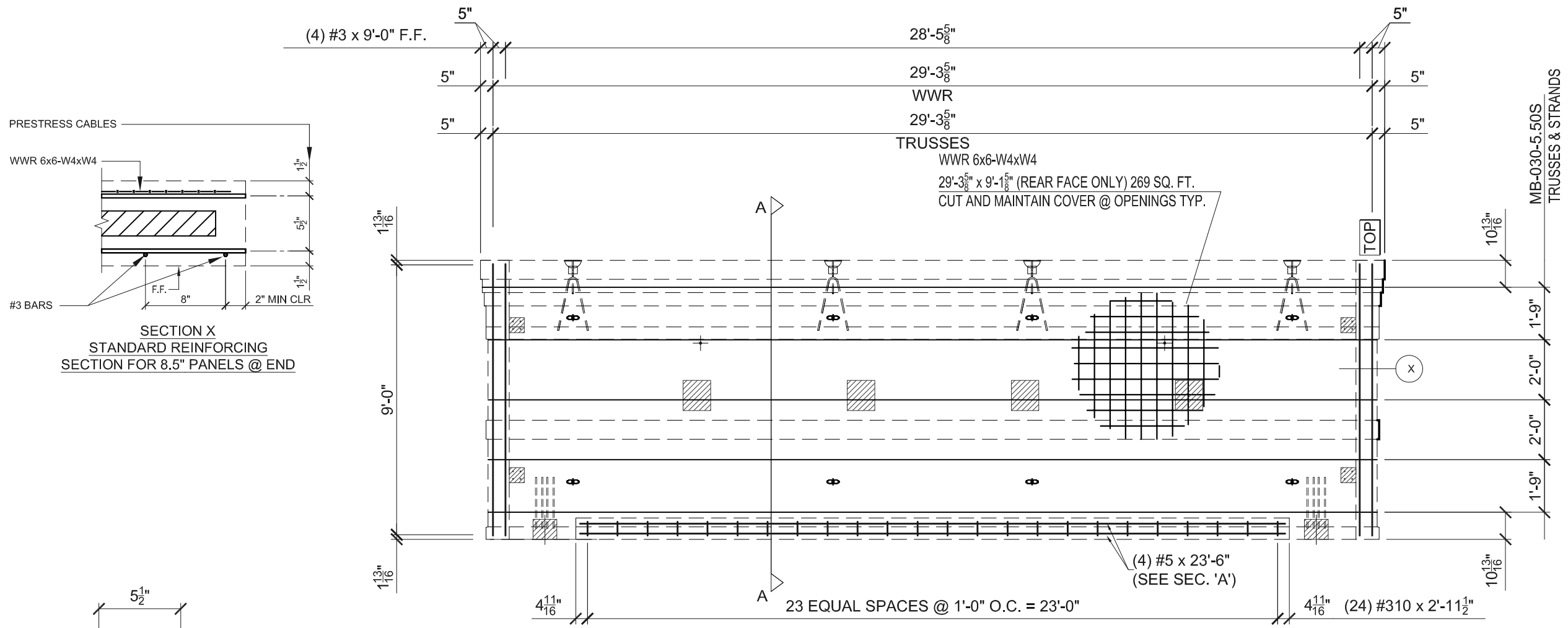
STRIP STRENGTH :
28 DAY :

S.F.:
FACE C.Y.:
BACK-UP C.Y.:
TOTAL C.Y.:
WT.:

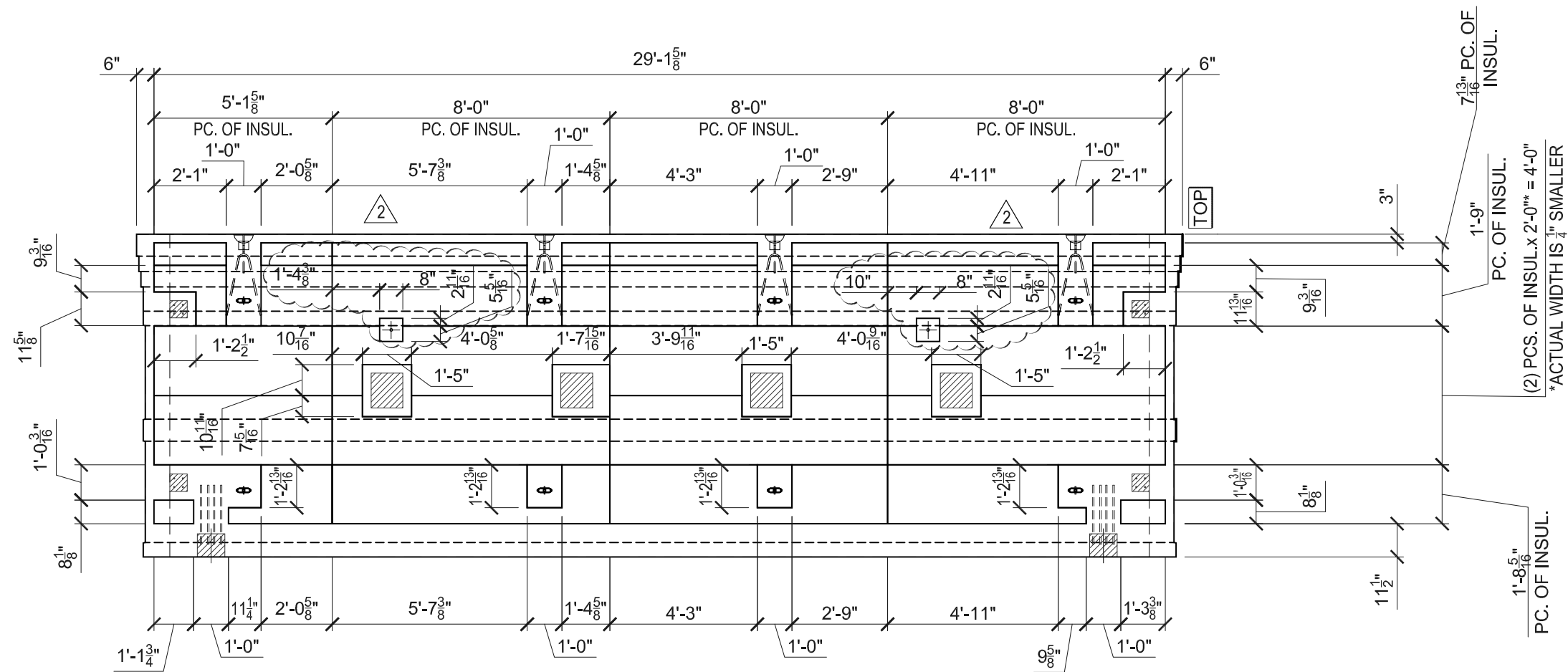
NO. REQ'D.: 1
PANEL NO.:

WF-11

SHEET 3 OF 6



PANEL REINFORCING SECTION A (STRAND PATTERN)

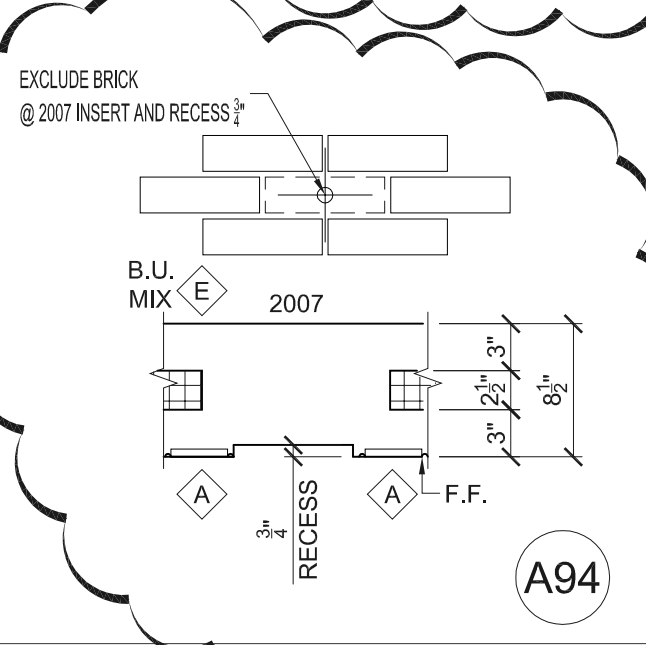
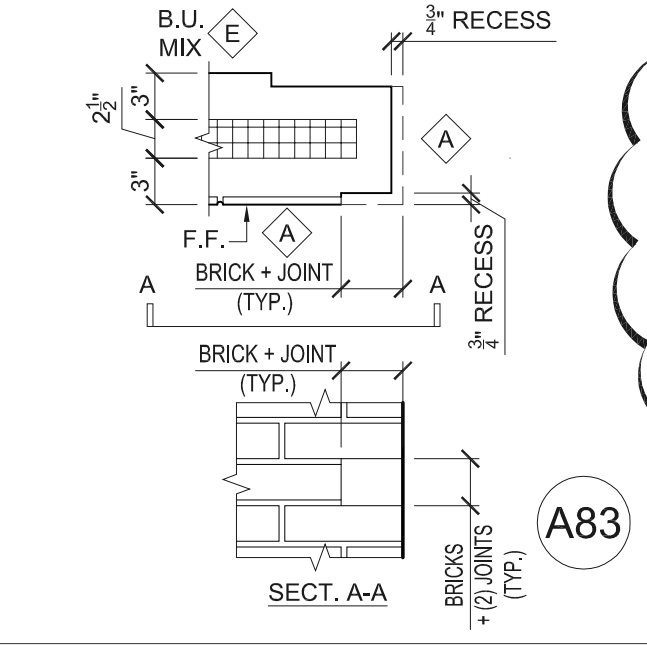
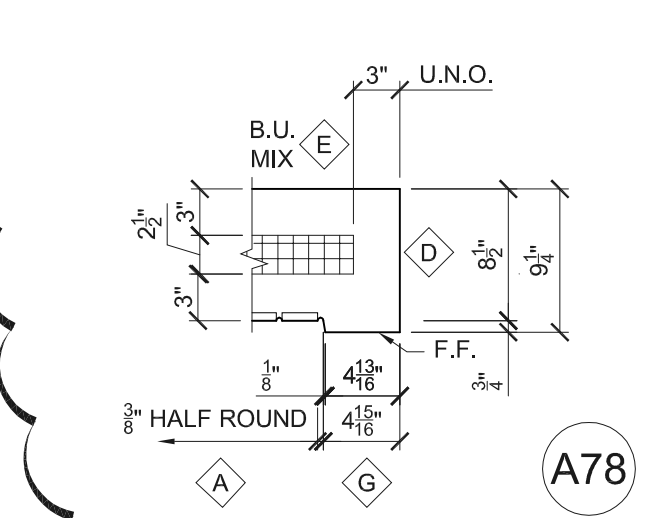
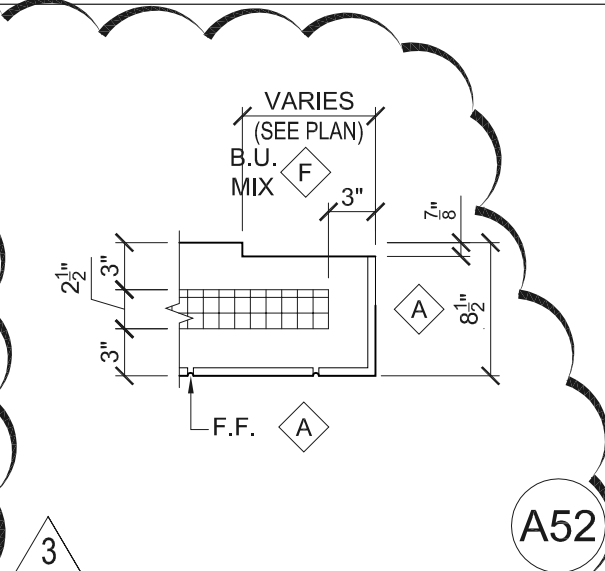
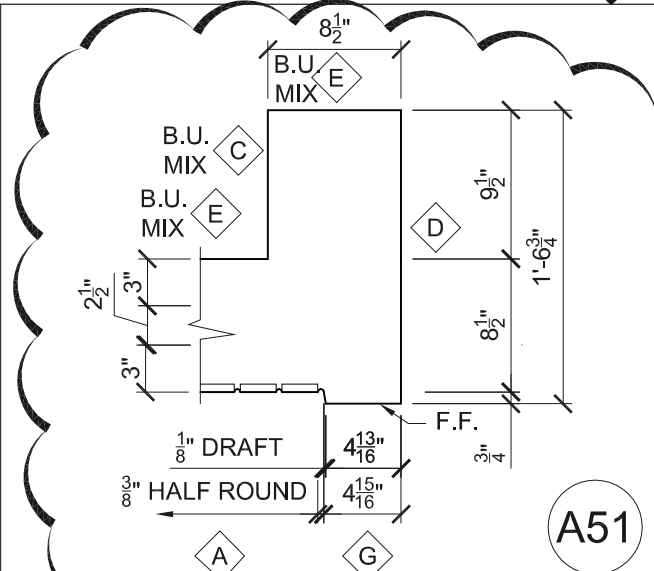
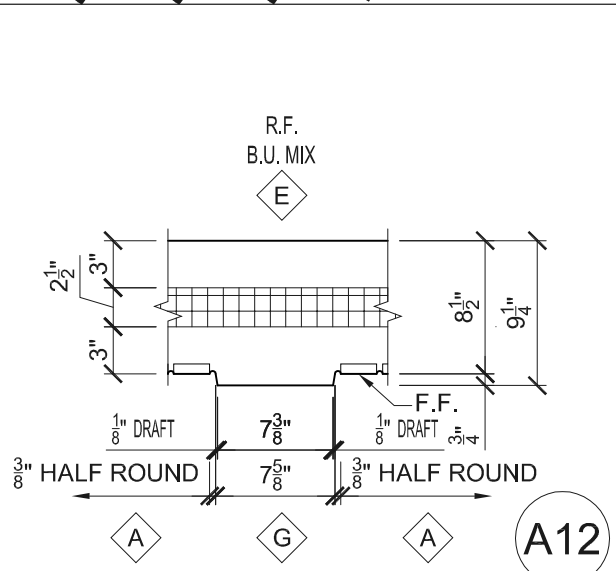
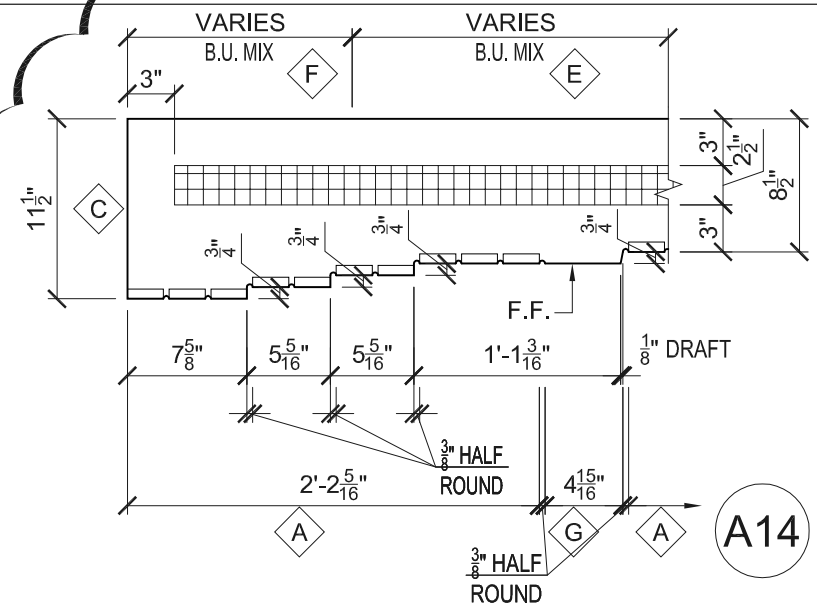


FORM VIEW
INSULATION LAYER

GENERAL NOTES			
▲ = SHIPPING RACKS			
△ = STORAGE DUNNAGE			
△ = SHIPPING & STORAGE RACKS			
GENERAL NOTES:			
1.			
2.			
FINISH NOTES			
A>BRICK/#4882 AE-L			
B>AP WOOD LINER BU AE-L			
C>UNFINISHED			
D>AE-L			
E>FLOAT			
F>STEEL TROWEL			
G>#4882 AE-L			
B.F.F. = BACK (from) FRONT FACE			
LIFTING		HARDWARE	
MARK	QTY.	MARK	QTY.
HARDWARE			
BENT REINFORCING BARS			
MARK	QTY.	MARK	QTY.

JOB# 16053		
ISSUE		
FORM		
PROD.	03/31/16	
1		
2	04/04/16	
3	04/04/16	
4	04/15/16	
5		
DRAWN BY:	PD	
CHECKED BY:	CS	
STRIP STRENGTH :		
28 DAY :		
S.F.:		
FACE C.Y.:		
BACK-UP C.Y.:		
TOTAL C.Y.:		
WT.:		
NO. REQ'D.:	1	
PANEL NO.:	WF-11	

SHEET 4 OF 6



GENERAL NOTES

- ▲ = SHIPPING RACKS
- △ = STORAGE DUNNAGE
- ◄ = SHIPPING & STORAGE RACKS

GENERAL NOTES:

-
-

FINISH NOTES

- ◇ B.BRICK/#4882 AE-L
- ◇ AP WOOD LINER BU AE-L
- ◇ UNFINISHED
- ◇ AE-L
- ◇ FLOAT
- ◇ STEEL TROWEL
- ◇ #4882 AE-L

B.F.F. = BACK (from) FRONT FACE

LIFTING		HARDWARE	
MARK	QTY.	MARK	QTY.

HARDWARE

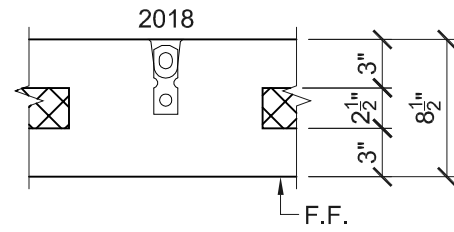
BENT REINFORCING BARS			
MARK	QTY.	MARK	QTY.

ISSUE

FORM		
PROD.	03/31/16	
1		
2	04/04/16	
3	04/04/16	
4	04/15/16	
5		

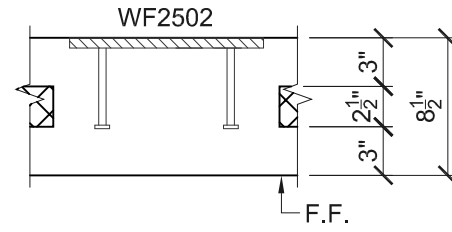
DRAWN BY: PD
 CHECKED BY: CS
 STRIP STRENGTH :3500 psi
 28 DAY : 5000 psi
 S.F.:
 FACE C.Y.:
 BACK-UP C.Y.:
 TOTAL C.Y.:
 WT.:
 NO. REQ'D.: 1
 PANEL NO.: WF-11

2018
DAYTON SUPERIOR
P-94 (FL850) 5 $\frac{1}{4}$ " LG.



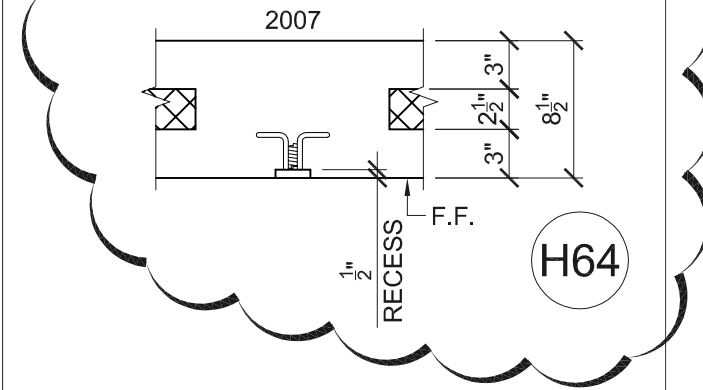
H2

WF2502



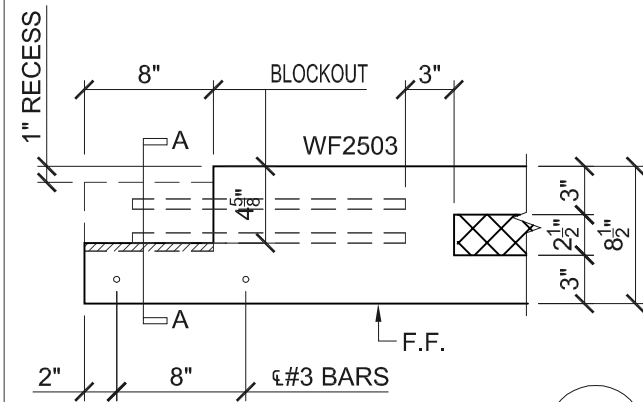
H3

2007
DAYTON SUPERIOR
F-63 1"Ø 2 $\frac{5}{16}$ " LG. INSERT



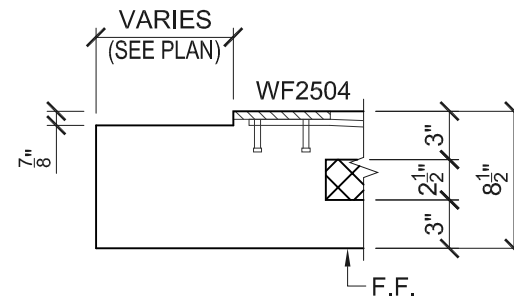
2

WF2503

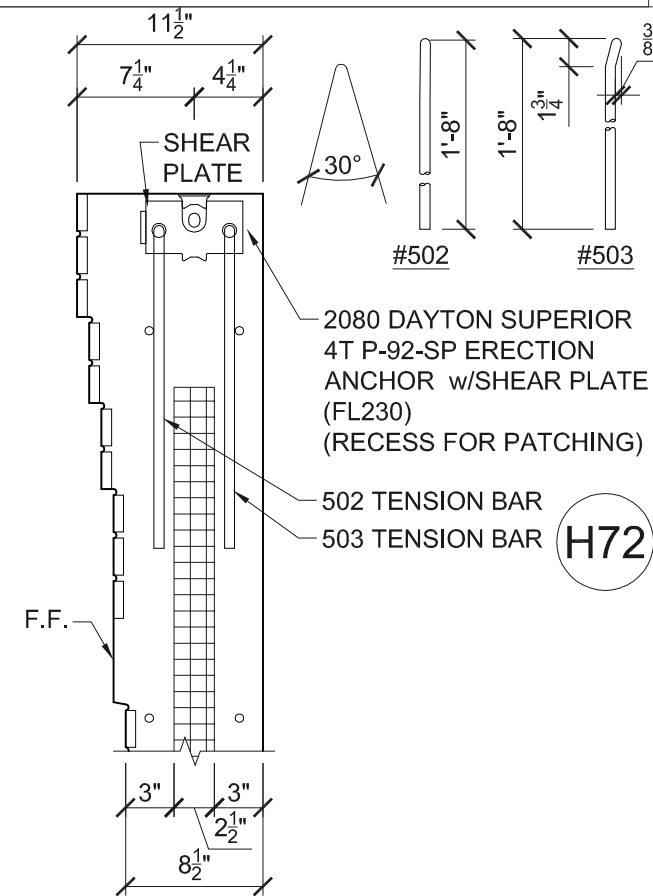


H5

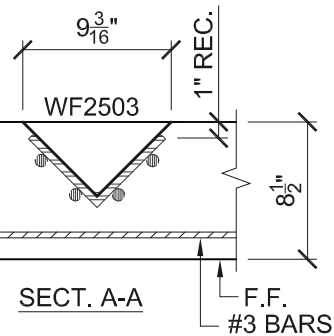
WF2504



H63



H72



GENERAL NOTES

- ▲ = SHIPPING RACKS
- △ = STORAGE DUNNAGE
- △ = SHIPPING & STORAGE RACKS

- GENERAL NOTES:
- 1.
 - 2.

FINISH NOTES

- △ A > BRICK/#4882 AE-L
- △ B > AP WOOD LINER BU AE-L
- △ C > UNFINISHED
- △ D > AE-L
- △ E > FLOAT
- △ F > STEEL TROWEL
- △ G > #4882 AE-L

B.F.F. = BACK (from) FRONT FACE

LIFTING		HARDWARE	
MARK	QTY.	MARK	QTY.

BENT REINFORCING BARS

MARK	QTY.	MARK	QTY.

ISSUE

FORM		
PROD.	03/31/16	
1		
2	04/04/16	
3	04/04/16	
4	04/15/16	
5		

DRAWN BY: PD
CHECKED BY: CS

STRIP STRENGTH :

28 DAY :

S.F.:

FACE C.Y.:

BACK-UP C.Y.:

TOTAL C.Y.:

WT.:

NO. REQ'D.: 1

PANEL NO.: WF-11

SHEET 6 OF 6